

SCHOOL DISTRICT OF COLBY EDUCATION CENTER

DR. STEVEN KOLDEN, SUPERINTENDENT

FINANCIAL AFFAIRS COMMITTEE MEETING

**MONDAY, JANUARY 18, 2016
6:30 PM
COLBY DISTRICT EDUCATION CENTER**

OPEN MEETING

AGENDA

- 1) Review Invoices & Receipts

Committee Members Include: Seth Pinter, Chair
Deb Koncel
Jennifer Lopez

SCHOOL DISTRICT OF COLBY EDUCATION CENTER

Dr. Steven Kolden, Superintendent

REGULAR SCHOOL BOARD MEETING

Monday, January 18, 2016 – 7:00 PM

Colby District Education Center

MEETING NORMS

- *The Board President will actively monitor our interactions.*
- *We will actively listen and not interrupt others.*

AGENDA:

1. CALL TO ORDER / ROLL CALL
2. PLEDGE OF ALLEGIANCE
3. NOTICE OF POSTING
4. PUBLIC PARTICIPATION
5. BOARD COMMENDATIONS
 - 5.01 Nick Weiler, Academic All-State Football Team
6. INFORMATION ITEMS:
 - 6.01 Student Board Representative Report
 - 6.02 Superintendent's Report – Steve Kolden [WASB State Convention; Promising Practices for Students with Disabilities]
 - 6.03 Strategic Planning Progress Monitoring – Workforce Development
7. CONSENT AGENDA
 - 7.01 Minutes from the December 21, 2015 Regular Board Meeting and the January 11, 2016 Special Board Meeting
 - 7.02 Requests for Out-of-State Travel
 - 7.03 Approve Board Member Attendance and Expenses for Travel Outside the District at Meetings Other Than Regular, Special or Committee Meetings
 - 7.03-1 WASB Legal and Human Resources Conference – Feb. 25-26, Wisconsin Dells
 - 7.04 Staff Resignations/Retirements/Leave Requests
 - 7.04-1 Sam Hayes, Varsity Baseball Coach
 - 7.05 Personnel – Transfers / New Hires
 - 7.05-1 Nancy Geiger, Colby Elementary Housekeeping (.5 FTE)
 - 7.06 Awards, Donations and Gifts to the School District of Colby (If Any)
8. REGULAR BUSINESS – CONSIDERATION OF:
 - 8.01 Agenda Items Moved From Consent Agenda
 - 8.02 Recommendation of Finance Committee
9. DISCUSSION INFORMATION
 - 9.01 Consideration of Reports of Board Members' Attendance at Seminars and Workshops
 - 9.02 2015-16 Budget Update
 - 9.03 Proposed Building Level Grade Shifts
 - 9.04 Proposed Alternative Pay Teacher Plan
 - 9.05 CESA 10 Contract for 2016-17
 - 9.06 Volunteers or Committee for Library Study Board
 - 9.07 Badger Exam and ACT Results

10. ACTION INFORMATION
 - 10.01 2016-17 School Calendar
 - 10.02 Open Enrollment Open Spaces – Administrative Procedure #522.71
11. CONVENE TO CLOSED SESSION PER WISCONSIN STATUTES 19.85 (1) FOR THE PURPOSES OF:
 - c) Considering employment, promotion, compensation or performance evaluation data of any public employee over which the governmental body has jurisdiction or exercises responsibility.
 - e) Deliberating or negotiating the purchasing of public properties, the investing of public funds, or conducting other specified public business, whenever competitive or bargaining reasons require a closed session. The Board will consider:
 - 11.01 Agenda Items Moved From Consent Information
 - 11.02 Agenda Items Moved From Action Information
 - 11.03 Sale of Neillsville Property (if needed)
 - 11.04 Administrative Contracts
 - 11.05 Reconvene in Open Session
12. THE BOARD WILL RECONVENE IN OPEN SESSION IMMEDIATELY UPON COMPLETING THE CLOSED SESSION TO TAKE ACTION, IF NECESSARY, ON SELECTED MATTERS DISCUSSED IN CLOSED SESSION.
13. IDENTIFY ITEMS FOR NEXT AGENDA
 - 13.01 Schedule Meetings:
 - 13.01-1 Special Board of Education Meeting – February 3, 2016 @ 5:30 PM
 - 13.01-2 Financial Affairs Committee Meeting – February 15, 2016 @ 6:30 PM
 - 13.01-3 Regular Board of Education Meeting – February 15, 2016 @ 7:00 PM
 - 13.01-4 Personnel Committee Meeting – ?
 - 13.01-5 Policy and Curriculum Committee Meeting – ?
 - 13.01-6 Facilities and Transportation Committee Meeting – ?
14. ADJOURNMENT

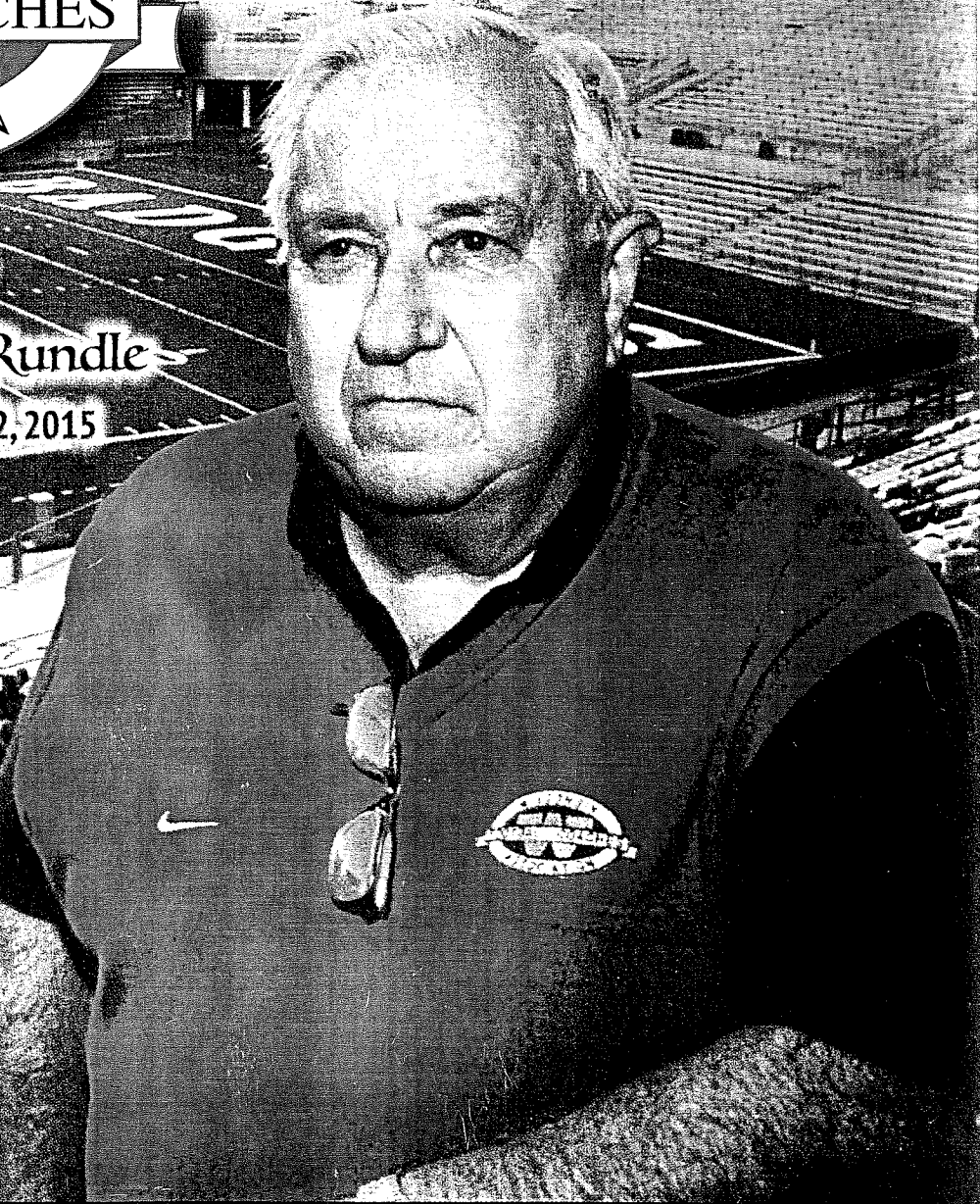
The Point After II

THE OFFICIAL PUBLICATION OF THE WISCONSIN FOOTBALL COACHES ASSOCIATION, VOL. 23, No.4, DECEMBER 2015



In Memory of
Richard Rhys "Dick" Rundle

November 29, 1934 - October 22, 2015



Editor: Tom Swittel • switteth@wauwatosa.k12.wi.us • 262-783-9872

WFCA Executive Director: Dan Brunner • brunnerd@wifca.org • 414-429-3139

Assistant Editor/Executive Assistant: Charna Kelsey • PO Box 8, Poynette, WI 53955 • office@wifca.org • 608-635-7318

www.wifca.org

January 11, 2016

Steven Kolden
Colby School District
PO Box 139
Colby, WI 54421

Dear Mr. Kolden:

Congratulations to Colby Elementary for being identified as a school that has demonstrated promising reading achievement for students with disabilities! The Department of Public Instruction conducted a rigorous review of data, based on numerous statistical, geographic, and demographic factors. Based on this review, a select number of schools were identified as having above average reading growth for students without disabilities.

We are excited to have representation from your district on the *Promising Practices for Students with Disabilities Workgroup*. The reason for forming this workgroup is in direct response to requests from stakeholders for the identification of strategies that could support improvement of literacy outcomes for students with disabilities. The workgroup will consist of 36 educators from around the state and will meet to develop resources that provide examples of practices/strategies that have been used to achieve greater than state average growth in the area of literacy for students with disabilities. A report highlighting identified promising practices, as well as videos, will be developed by school-based representatives. The school-based representatives will meet four times over the next several months to develop strategies and supporting resources and materials that align with the following four focus areas: effective instruction, student-teacher relationships, family and community engagement, and school and instructional leadership.

We believe that this work will support and align with Dr. Tony Evers' College and Career Readiness and Agenda 2017. The charge for the *Promising Practices for Students with Disabilities Workgroup* includes:

- Examine and recommend examples of practices/strategies to increase literacy outcomes for students with disabilities; and
- Develop resources for Wisconsin educators working to increase literacy outcomes for students with disabilities.

Congratulations once again and we look forward to working with your school in efforts to improve literacy outcomes for students with disabilities.

Sincerely,



Barbara Van Haren, PhD, Director
Special Education Team
Division for Learning Support

BVH:ef

Operationalizing a Strategic Plan

The success of this endeavor is based on the leadership of the Board of Education and the Superintendent to operationalize this plan.

The effects of atrophy can be minimized by creating an accountability process. This process includes:

- Monitoring cycles
- Timely reporting of progress
- Identification of roles and responsibilities
- Implementation of action plans
- Evaluation or measurement of success
- Adjustment of action plans
- Annual review and establishing of yearly goals

The process described above is called Plan-Do-Study-Act and was developed and promoted by the American Society for Quality. This organization is very heavily connected to business and industry and is a leader in developing systems that aid in producing high quality and effective management practices.

Monitoring Cycle

April 2015 – Superintendent Report; to the Board of Education

May 2015 – **Collaboration and Cooperation**; Report to the Board of Education

June 2015 – Superintendent Report; to the Board of Education

July 2015 – Superintendent Report; to the Board of Education

August 2015 – **Technology**; Report to the Board of Education

September 2015 – **Teaching and Learning**; Report to the Board of Education

October 2015 – Superintendent Report; to the Board of Education

November 2015 – **Facilities and Operations**; Report to the Board of Education

December 2015 – Superintendent Report; to the Board of Education

January 2016 - **Workforce Development**; Report to the Board of Education

February 2016 – **Stakeholder Satisfaction**; Report to the Board of Education

February/March, 2016 – **ANNUAL Community Summative Review of Action Plans and Accomplishments**

- **Workforce Development**

Chair: Audra Brooks

TEAM MEMBERSHIP: Laurie Hesgard, HR rep, Teachers (2), Marcia Diedrich, Support staff reps(2), Board rep (personnel committee)

Defined as;

The Colby School District will utilize best practices to hire, retain, engage, and develop a skilled and talented workforce that will enable the District to achieve its mission of Learning for ALL.

- | | |
|---------|--|
| Goal #1 | Establish professional development priorities aligned with our Mission, Vision and Strategic Planning. |
| Goal #2 | Explore alternative compensation models and propose an alternative compensation model to the Personnel Committee by May of 2015. |
| Goal #3 | Develop a recruitment strategy for ALL staff positions to attract and retain quality personnel (Marketing, WECAN?) |
| Goal #4 | Continue to focus on professional improvement and improved student learning. |

REGULAR MEETING MINUTES
BOARD OF EDUCATION – SCHOOL DISTRICT OF COLBY
MONDAY, DECEMBER 21, 2015
COLBY DISTRICT/EDUCATION CENTER

The Regular School Board Meeting on December 21, 2015 was called to order at 7:00 PM at the Colby District Education Center by Board President, William Tesmer. Members present were: William Tesmer, Deb Koncel, Lavinia Bonacker, Eric Elmhurst, Jennifer Lopez, Seth Pinter, and Cheryl Ploeckelman. Also present were Superintendent Steven Kolden and Kristen Seifert.

The meeting notice was posted according to the requirements of the open meeting law.

The District received a thank you from the Shannon Family.

Preston Mertins, student board representative, was absent.

Mr. Kolden updated the Board on the WASB State Convention; the Educational Options required postings; Burnett Transit Bus Holiday Breakfast on December 22; Board candidate filing dates; ESSA update; Scholar Athlete Banquet on March 15; Open Enrollment limits for 2016-17.

Mr. Kolden updated the Board on the Strategic Planning Progress and status of each committee.

Motion by Mrs. Bonacker, seconded by Mrs. Lopez, approve the Consent Agenda as presented:

Minutes from the November 16, 2015 regular Board of Education meeting

8th Grade trip to Washington D.C. and Gettysburg – June 6-10, 2016

Resignation of Daniel Malecki, Custodian (.5 FTE)

Resignation of Dawn Hebda, Elementary Server (3 Hrs/Day)

Hire of Bonnie Schmitt, Elementary Server (3 Hrs/Day)

Hire of Bryon Graun, Instructional Technology – District Coordinator

Hire of Dora Szemborski, Instructional Technology – Building Support, High School

Hire of Rachel Munger, Instructional Technology – Building Support, Middle School

Hire of Melissa McConnell, Instructional Technology – Building Support, Elementary

Hire of Treva Brodhagen, Increase FTE from .5 to 1.0 FTE for Remainder of 2015-16

Voice vote – motion carried.

Motion by Mr. Elmhurst, seconded by Mrs. Bonacker to approve the receipts and invoices as presented. Voice vote – motion carried.

Financial Report

TOTAL REVENUE – NOVEMBER		\$ 291,015.43
NICOLET NATIONAL BANK-BANK WIRES - FEDERAL w/SS	1932-1943	\$ 143,783.07
FORWARD FINANCIAL BANK-MANUAL CHECK	172 – 177	\$ 69,288.11
REGULAR CHECKS	31188-31214	\$ 20,377.68
DIRECT DEPOSITS	900060386-900060908	\$ 416,414.21
ADVANTAGE BANK-REGULAR CHECKS	70310-70560	\$ 598,407.37
TOTAL CHECKS TO BE APPROVED		\$ 1,248,270.44

Mrs. Ploeckelman updated the Board on her attendance at the CESA 10 meeting and shared the idea of the District using a “P Card” for district purchases. Mr. Elmhurst updated the Board on his attendance at a CESA meeting and the desire to have school districts create a common calendar.

Mr. Kolden reviewed the 2015-16 budget update.

The Board discussed the option of Auditors for 2016. The board would like to stay with Johnson & Block but research the option of receiving a combined bid with Abbotsford School District, City of Abbotsford, and City of Colby.

Mr. Kolden and Mrs. Brooks, District Bookkeeper, summarized the Capital Projects Funds.

Mrs. Penry, Homeless Liaison, updated the board on homeless education. Currently the District has 27 students identified as homeless.

The board reviewed a proposed 2016-17 school calendar. The board would like to see the Abbotsford and Spencer school calendars and this placed on the January agenda.

Motion by Mr. Elmhurst, seconded by Mrs. Bonacker to allow Mrs. Koncel to vote her conscience on all WASB resolutions during the WASB Annual Meeting. Voice vote – motion carried.

Motion by Mrs. Ploeckelman, seconded by Mr. Elmhurst, to approve the second reading of Policy #423 – Open Enrollment Policy; Policy #133 – Filling Board Vacancies; Policy #426 – Homeless Education; Policy #731.3 – Use of UAV's at School Events; Policy #663 – Post Issuance Compliance Policy Policy #151.1 – Handbook Language Changes and Updates as presented. Voice vote – motion carried.

Motion by Mrs. Ploeckelman, seconded by Mr. Elmhurst, to approve the first reading of revisions to Handbook Part III, sections 2.05 and 7.05. Roll call vote – Motion carried 6-0-1; Yes – Mrs. Koncel, Mrs. Bonacker, Mr. Pinter, Mr. Elmhurst, Mrs. Lopez, Mrs. Ploeckelman; No- None; Abstain – Mr. Tesmer.

Motion by Mrs. Bonacker, seconded by Mrs. Lopez to accept with gratitude the donation from Adler-Clark for the purchase of Chromebooks. Voice vote – motion carried.

Motion by Mrs. Bonacker, seconded by Mr. Elmhurst to approve the Act 32 projects list as recommended by the Facilities Committee. Voice vote – motion carried.

Motion by Mr. Elmhurst, seconded by Mrs. Bonacker to approve the contract with ICS for 2016 Act 32 projects. Voice vote – motion carried.

Motion by Mr. Elmhurst, seconded by Mrs. Bonacker to approve the contract with Market and Johnson for 2016 Act 32 projects. Voice vote – motion carried.

Motion by Mrs. Ploeckelman, seconded by Mr. Elmhurst to approve the Environmental Project Agreement with CESA 10 not to exceed \$5,500. Voice vote – motion carried.

Motion by Mrs. Ploeckelman, seconded by Mr. Elmhurst, to convene in closed session per Wisconsin Statutes 19.85 c) Considering employment, promotion, compensation or performance evaluation data of any public employee over which the governmental body has jurisdiction or exercises responsibility. e) deliberating or negotiating the purchasing of public properties, the investing of public funds, or conducting other specified public business, whenever competitive or bargaining reasons require a closed session.

- 11.01 Agenda Items Moved From Consent Agenda
- 11.02 Agenda Items Moved from Action Information
- 11.03 Individual Staffing Considerations for 2016-17
- 11.04 Sale of Neillsville Property
- 11.05 Superintendent Evaluation
- 11.06 Administrative Contracts and Compensation

Roll call vote – Motion carried 7-0; Yes – Mrs. Koncel, Mrs. Bonacker, Mr. Tesmer, Mr. Elmhurst, Mrs. Lopez, Mr. Pinter, Mrs. Ploeckelman; No- None; Abstain-None. 8:35 PM

Motion by Mrs. Ploeckelman, seconded by Mrs. Elmhurst, to move from closed session and to reconvene in open session as previously announced. Voice vote - motion carried. 9:38 PM

Motion by Mr. Elmhurst, seconded by Mrs. Bonacker to approve a 1.62% salary wage pool increase to be divided equally by FTE for administrators. Voice vote – motion carried.

Scheduled Board of Education Meetings:

Financial Affairs Committee Meeting – January 18, 2016 @ 6:30 PM

Regular Board of Education Meeting – January 18, 2016 @ 7:00 PM

Referendum Planning Small Group – Special Board Meeting – February 3, 2016 @ 5:30 PM

Motion by Mr. Elmhorst, seconded by Mrs. Lopez, to adjourn the meeting. Voice vote - motion carried. Meeting adjourned at 9:44 PM.

Respectfully Submitted:

Eric Elmhorst, Clerk

Kristen Seifert, Reporting Secretary

SPECIAL MEETING MINUTES
BOARD OF EDUCATION – SCHOOL DISTRICT OF COLBY
MONDAY, JANUARY 11, 2016
COLBY DISTRICT/EDUCATION CENTER

The Special School Board Meeting on January 11, 2016, was called to order at 5:03 PM at Colby District Education Center by Board President William Tesmer. Members present were William Tesmer, Cheryl Ploeckelman, Eric Elmhurst, Seth Pinter, Lavinia Bonacker and Deb Koncel. Board member Jennifer Lopez was absent. Also present were Superintendent Steven Kolden and Kristen Seifert.

The meeting notice was posted according to the requirements of the open meeting law.

Motion by Mrs. Ploeckelman, seconded by Mrs. Bonacker, to convene in closed session per Wisconsin Statutes 19.85 e) deliberating or negotiating the purchasing of public properties, the investing of public funds, or conducting other specified public business, whenever competitive or bargaining reasons require a closed session.

5.01 Sale of Neillsville Property

Roll call vote – Motion carried 6-0; Yes – Mrs. Koncel, Mrs. Bonacker, Mr. Tesmer, Mr. Elmhurst, Mr. Pinter, Mrs. Ploeckelman; No- None; Abstain-None. 5:05 PM

Mrs. Lopez arrived at 5:09 PM.

Motion by Mr. Pinter, seconded by Mrs. Lopez, to move from closed session and to reconvene in open session as previously announced. Voice vote - motion carried. 5:14 PM

Motion by Mrs. Ploeckelman, seconded by Mrs. Lopez, to approve the Amendment to offer to purchase of 1210 W. 4th Street, Neillsville, WI 54456 and to authorize the Board President – William Tesmer, or Board Treasurer – Seth Pinter, and/or Board Clerk – Eric Elmhurst to sign the WB-40 form. Voice vote - Motion carried.

Motion by Mrs. Ploeckelman, seconded by Mrs. Bonacker to authorize the sale of 1210 W. 4th Street, Neillsville, WI 54456 to “Riverside Assisted Living LLC” and John R. Chadwick and Jennifer L. Chadwick for the amount specified in the accepted offer dated July 27, 2015. The Board further designates Board President – William Tesmer, or Board Treasurer – Seth Pinter, and/or Board Clerk Eric Elmhurst as authorized signatories for any and all closing documents and requires two signatures on each document.

Motion by Mrs. Koncel, seconded by Mr. Pinter, to adjourn the meeting. Voice vote - motion carried. Meeting adjourned at 5:16 PM.

Respectfully Submitted:

Eric Elmhurst, Clerk

Kristen Seifert, Reporting Secretary

Colby High School FFA

Colby High School • 705 North Second Street • Colby, Wisconsin 54421



Chelsea Stuttgart
President

Kyle Roth
Vice President

Zach Kolzow
Secretary

Bailey Krause
Treasurer

Alicia Viken
Reporter

Phillip Roth
Sentinel

Melissa Ploeckelman
Advisor

Aime Long
Advisor

To: Colby School Board

From: Colby FFA

September 23, 2014

The Colby FFA is requesting permission to attend the World's Toughest Rodeo in St. Paul, Minnesota on Saturday February 6, 2016. This is an annual event for our FFA organization. There will be no cost to the Colby School District. It will be funded entirely by the Colby FFA chapter and the members.

We will be departing Colby High School at 6:30-7 am and will be returning approximately at 2 am on Sunday morning. We will be stopping at the Mall of America, I-Max Movie, Old Country Buffet, the World's Toughest Rodeo, and watching a concert that follows.

Thank you for your support of our program.

Sincerely,

Melissa Ploeckelman
Colby FFA Advisor

Aime Long
Colby FFA Advisor

2016 Legal and Human Resources Conference



The WASB 2016 Legal and Human Resources Conference is designed to give school board members and administrators the latest legal information to help them in governing their districts as effectively as possible. The conference features WASB staff and industry experts. Members may register for one day or two days at a discounted rate. We look forward to seeing you at the conference!

Registration Information –

The registration fee is \$145 (1 day) or \$215 (2 days). Registration includes all materials, continental breakfast and lunch. **The deadline to register is Thursday, Feb. 18, 2016.** Refunds will be given for cancellations received by that time. To cancel, call toll-free 877.705.4422. Register online at WASB.org.

Location –

Wisconsin Dells

Chula Vista Resort

2501 River Road, Wisconsin Dells WI 53965

Reservations: 844-788-6861

chulavistaresort.com/book-online/

Hotel Rates: \$92 - Single or Double

Cut-off Date for Hotel Rooms: Feb. 3, 2016

Please mention ID Booking # E32249 when making room reservations to get the special group rates. Reservations cancelled 72 hours or more in advance will receive refund less a \$25 processing fee; less than 72 hours - no refund.

Maps and driving directions available at wasb.org.

Use the QR Code to link to the event home page for complete information and to register.



Schedule At-A-Glance

(Choose one session each time period)

Thursday, February 25 Agenda

8:30 am Registration and Continental Breakfast

9:00 am
The Best Offense is ... a Good Offense: Implementing Successful School-to-Work Programs

Gänder Consulting

WI Dept. of Workforce Development

Investigating Employee Misconduct

WASB

10:20 am Break

10:40 am
The Most Effective Cooperative Approaches to Employee Benefits

Associated Financial Group

Responding to Public Records Requests for Personnel Files
WASB

12 noon Lunch

1:00 pm
Safe Employees = Safe Students
TRICOR Insurance

Fair Labor Standards Act (FLSA): New Federal Rules
WASB

2:20 pm Break

2:40 pm
Legal Considerations for Athletics and Activities Programs
WASB

Leave Rights of Employees with Serious Health Conditions
WASB

4:00 pm Adjourn

Friday, February 26 Agenda

8:30 am Registration and Continental Breakfast

9:00 am
Integrating Risk Management with Employee Benefits

Kaukauna Area School District
M3 Insurance

Nonrenewal of Teacher Contracts

WASB

10:20 am Break

10:40 am
Strategically Implementing and Communicating Wellness to Reduce Costs and Maintain Quality

Waupaca School District
M3 Insurance

Special Education Update: Hot Topics Related to IDEA, Section 504 and Restraint and Seclusion
Malina Piontek, LLC

12 noon Lunch

1:00 pm
Understanding the School Board Role in High-Stakes Employee and Student Decisions
WASB

Schools in the Middle: Legal Issues Related to Transgender Students

Malina Piontek, LLC

1:50 pm Break

2:10 pm
Superintendent Evaluation: System and Dynamics
WASB

Board Member Conflicts of Interest
WASB

3:00 pm Adjourn



**Colby
School
District**

Seifert, Kristen <kseifert@colby.k12.wi.us>

Fwd: Resignation

1 message

Hagen, Jim <jhagen@colby.k12.wi.us>

Mon, Jan 4, 2016 at 3:51 PM

To: Kristen Seifert <kseifert@colby.k12.wi.us>, Steve Kolden <skolden@colby.k12.wi.us>

Kristen,

Can you place this on the January school board meeting please?

Jim

----- Forwarded message -----

From: **Jackie_Sam Hayes** <jackie.hayes5@hotmail.com>

Date: Mon, Jan 4, 2016 at 3:48 PM

Subject: Resignation

To: jhagen@colby.k12.wi.us

I hereby tender my resignation as the Varsity Baseball coach. Thank you for the opportunity to coach the team.

Samuel P. Hayes

--

Jim Hagen
Colby Middle School Principal/Activities Director
Assistant Varsity Football Coach
(715)-223-8869 ext. 4225

SCHOOL DISTRICT OF COLBY EDUCATION CENTER

Dr. Steven Kolden, Superintendent

Request To: Hire ☒ Transfer ☐ Expand Employment ☐

(Please check appropriate assignment)

Purpose: To request approval for persons who have been transferred to a new position, have current assignment expanded, or tendered employment. In order to insure compliance with federal and state laws, clearance must be obtained from the human resources director prior to the person reporting to work.

Geiger, Nancy
Employee's Name: Last, First

Part-time Custodian Elem.
Position and Building Location

Continuing Position? Yes ☒ No ☐
(If no, Start and End Dates) _____ through _____

☐ Administrator; ☐ Continuing Teacher; ☐ Emergency Teacher; ☐ Long Term Sub; ☐ Instructional Aide ☐ Clerical;

☐ Maintenance; ☐ Food Service; ☐ Coach; ☒ Other: House Keeping

Work schedule for hourly staff (to include scheduled lunch break) 3:45 ^{pm} a.m. to 7:45 p.m.

Desired start date: Jan. 18, 2016 Is this a support staff position? Yes ☒ No ☐ If yes, please attach work

calendar. Does this position require a substitute? Yes ☒ No ☐

Indicate all account number(s) and percent of time for each account number to charge wages to (including grant accounts)

Hire Requested by:

Dennis Wenzel
Immediate or Program Supervisor's Signature

Jan. 14, 2016
Date

S. Kolden
Superintendent's Signature

1-14-2016
Date

Reason for position vacancy: a resignation

Person vacating position: Don Melick

Date position was vacated: 12/11/2015

Recruitment area: Elem.

Number of candidate files: 1

Person(s) doing screening: Dennis Wenzel

Number of candidates after screening: 1

Person(s) doing interviewing: Dennis Wenzel

Number of candidates interviewed: 1

Candidate Biography / resume & application on back

FINANCIAL REPORT
BOARD OF EDUCATION MEETING
JANUARY 18, 2016

TOTAL REVENUE -
DECEMBER \$ 1,769,892.65

NICOLET NATIONAL BANK -
BANK WIRES - FEDERAL w/SS 1944-1958 \$ 134,607.43

FORWARD FINANCIAL
MANUAL CHECKS 178-179 \$ 7,001.25
REGULAR CHECKS 31215-31226 \$ 6,813.70
DIRECT DEPOSITS 900060909-900061075 \$ 136,298.13
900061076-900061245 \$ 131,450.59
WIRE TRANSFERS 201500001-201500007 \$ 80,907.76

ADVANTAGE BANK-
REGULAR CHECKS 70561-70564 \$ 3,040.32
70565-70609 \$ 8,630.33
70610 \$ 85.00
70611 \$ 159.74
70612-70623 \$ 4,983.41
70624-70637 \$ 1,191.38
70638-70639 \$ 406.00
70640-70714 \$ 292,062.44

TOTAL CHECKS TO BE APPROVED \$ 807,637.48

BATCH	DESCRIPTION	FISCAL YEAR	POST DATE	BATCH ORIGIN	STATUS
CASH	DECEMBER 2015 CASH REPORT	2015-2016	12/31/2015	Batch Entry	Batch

BANK	LINE	NAME/PROJ	DESCRIPTION/REFERENCE	ADDT'L DESCRIPTION	ACCOUNT	RECEIPT#	ENTRY DT	DEBIT AMOUNT	CREDIT AMOUNT
BNK2	1		ST MARYS UNIVERSITY	INSTRUCTOR REIMBURS	10 R 800 449 500000 933	722465	12/07/15	0.00	660.00
BNK2	2		CITY OF COLBY	MOBILE HOME TAX - N	10 R 800 213 500000 000	722466	12/07/15	0.00	225.45
BNK2	3		ADLER CLARK FOUNDATION	GRANT	21 R 800 291 500000 910	722467	12/07/15	0.00	2,000.00
BNK2	4		INTERNATIONAL QUALITY HOME	NEILLSVILLE RENT	10 R 900 293 500000 000	722468	12/08/15	0.00	400.00
BNK2	5		SMAZAL	DONATION - FENCE	21 R 800 291 500000 938	722469	12/08/15	0.00	3,450.00
BNK2	6		COLBY BOOSTER CLUB	MILK - SWIM TEAM	50 R 800 259 257220 000	722470	12/08/15	0.00	30.00
BNK2	7		COLBY BOOSTER CLUB	REIMBURSEMENT TO PA	10 R 800 291 162000 000	722471	12/08/15	0.00	500.00
BNK2	8		EMC	WC PAYMENT/UNDERWOO	10 R 800 964 500000 000	722472	12/08/15	0.00	300.84
BNK2	9		PROVISION	DIVIDEND	10 R 800 971 500000 000	722473	12/08/15	0.00	273.06
BNK2	10		WESTERN WI CARES	RENT - NEILLSVILLE	10 R 900 293 500000 000	722474	12/08/15	0.00	3,737.89
BNK2	11		HOTEL ACCOUNTING/MARCUS HOTELS RESORTS	REFUND OF HOTEL	10 R 800 279 500000 000	722475	12/08/15	0.00	204.00
BNK2	12		CLARK CO	RENT/NEILLSVILLE	10 R 900 293 500000 000	722476	12/08/15	0.00	1,102.50
BNK2	13		NTC	NTC ADVISORY	10 R 800 515 500000 000	722477	12/08/15	0.00	4,070.00
BNK5	14		STUDENT	ATHLETIC FEES	10 R 800 292 162000 000	722478	12/01/15	0.00	60.00
BNK5	15		STUDENTS	ATHLETIC FEES	10 R 800 292 162000 000	722479	12/02/15	0.00	300.00
BNK2	16		STEEN	BANK CHARGE	10 R 800 279 500000 000	722480	12/09/15	0.00	5.00
BNK2	17		ABBY BANK	DONATION - COLBY HO	21 R 800 291 500000 939	722481	12/10/15	0.00	1,000.00
BNK2	18		THOMSEN	BANK CHARGE	10 R 800 279 500000 000	722482	12/14/15	0.00	5.00
BNK2	19		CURRENT TECHNOLOGIES	INSPECTION	10 E 800 940 253300 000	722483	12/14/15	0.00	460.00
BNK2	20		PARENT TEACHER CLUB	LAMINATE	10 E 100 411 110000 000	722484	12/15/15	0.00	43.88
BNK2	21		IDEA FOUNDATION	KATIE KUBES GRANT	21 R 800 291 500000 815	722485	12/23/15	0.00	461.40
BNK5	22		STUDENT	DAMAGED CHROMEBOOK	10 R 800 292 266000 000	722486	12/15/15	0.00	39.00
BNK5	23		STUDENT	LOST PE LOCK	10 R 800 297 500000 000	722487	12/17/15	0.00	5.00
BNK5	24		STUDENT	LOST MATH BOOK	10 R 800 297 500000 000	722488	12/17/15	0.00	10.00
BNK2	25		FEITEN	REIMBURSEMENT FOR R	27 E 800 342 221300 341	722489	12/17/15	0.00	144.00
BNK2	26		COLBY PT CLUB	COOKIES PURCHASE	50 R 800 259 257220 000	722490	12/23/15	0.00	7.00
BNK2	27		EBC	FLEX FORFEITURE	10 R 800 990 500000 000	722491	12/23/15	0.00	2,706.92
BNK2	28		WI DPI	SPED AID PAYMENT	27 R 800 611 150000 000	722492	12/21/15	0.00	54,130.00
BNK2	29		WI DPI	EQUALIZED AID	10 R 800 621 500000 000	722493	12/07/15	0.00	1,632,839.00
BNK2	30		WI DPI	EDUCATOR EFF. GRANT	10 R 800 630 500000 583	722494	12/21/15	0.00	6,320.00
BNK2	31		WI DPI	COMMODITIES CHARGE	50 E 800 387 257220 000	722495	12/14/15	1,130.65	0.00
BNK2	32		WI DPI	LUNCH CLAIM	50 R 800 717 257220 000	722495	12/14/15	0.00	28,405.81
BNK2	33		WI DPI	ADJUSTMENT ON FOOD	50 R 800 717 257220 000	722496	12/07/15	0.00	97.30
BNK2	34		WI DPI	ADJ COMM CHARGE	50 E 800 387 257220 000	722496	12/07/15	97.30	0.00

BATCH	DESCRIPTION	FISCAL YEAR	POST DATE	BATCH ORIGIN	STATUS
CASH	DECEMBER 2015 CASH REPORT	2015-2016	12/31/2015	Batch Entry	Batch

BANK	LINE	NAME/PROJ	DESCRIPTION/REFERENCE	ADDT'L DESCRIPTION	ACCOUNT	RECEIPT#	ENTRY DT	DEBIT AMOUNT	CREDIT AMOUNT
. . . CONTINUED									
BNK2	35		WI DPI	BREAKFAST CLAIM - A	50 R 800 717 257225 000	722496	12/07/15	0.00	28.32
BNK2	36		WI DPI	BREAKFAST CLAIM	50 R 800 717 257225 000	722496	12/07/15	0.00	2,027.60
BNK2	37		WI DPI	BREAKFAST CLAIM	50 R 800 717 257225 000	722796	12/07/15	0.00	5,414.66
BNK5	38		STUDENTS	ATHLETIC FEES	10 R 800 292 162000 000	722497	12/23/15	0.00	270.00
BNK2	39		NICOLET	INTEREST	10 R 800 280 500000 000	722498	12/31/15	0.00	236.08
BNK3	40		NICOLET	INTEREST	39 R 800 280 281000 000	722499	12/31/15	0.00	5.17
BN72	41		NICOLET NATIONAL BANK	INTEREST	72 R 800 280 420000 000	722500	12/31/15	0.00	4.25
BN46	42		NICOLET	INTEREST	46 R 800 280 500000 000	722501	12/31/15	0.00	15.49
BNK5	43		NICOLET NATIONAL BANK	INTEREST	10 R 800 280 500000 000	722502	12/31/15	0.00	7.10
BNK1	44		FORWARD BANK	INTEREST	10 R 800 280 500000 000	722503	12/31/15	0.00	15.27
BNK5	45		STUDENTS	MILK MONEY	50 R 800 251 257250 000	722504	12/22/15	0.00	499.50
BNK5	46		STUDENTS	LUNCH MONEY	50 R 800 251 257220 000	722505	12/31/15	0.00	18,573.50
BNK0	47		ADVANTAGE COMMUNITY BANK	INTEREST	10 R 800 280 500000 000	722506	12/31/15	0.00	30.61
47 LINE ENTRIES FOR BATCH NUMBER CASH						TOTALS FOR BATCH		1,227.95	1,771,120.60
						BATCH TOTAL DIFFERENCE		0.00	-1,769,892.65
47 LINE ENTRIES FOR 1 BATCH						GRAND TOTALS		1,227.95	1,771,120.60
						GRAND TOTAL DIFFERENCE		0.00	-1,769,892.65

***** End of report *****

SUMMARY

NICOLET:

MANUAL CHECKS – 1944-1958 = \$134,607.43

FORWARD FINANCIAL:

MANUAL CHECKS – 178-179 = \$7,001.25

REGULAR CHECKS – 31215-31226 = \$6,813.70

DIRECT DEPOSITS – 900060909-900061075 = \$136,298.13

900061076-900061245 = \$131,450.59

WIRE TRANSFERS – 201500001-201500007 = \$80,907.76

NICOLET NATIONAL BANK: \$134,607.43

1944	EMPLOYEE BENEFITS CORPORATION	M	12/11/2015	\$1,615.08
1945	NICOLET NATIONAL BANK	M	12/11/2015	\$46,391.83
1946	WEA TRUST ADVANTAGE	M	12/1/2015	\$1,645.88
1947	WEA TRUST ADVANTAGE	M	12/11/2015	\$1,705.09
1948	WEA TRUST ADVANTAGE	M	12/24/2015	\$1,708.75
1949	EMPLOYEE BENEFITS CORPORATION	M	12/24/2015	\$1,615.08
1950	WI DEPT OF REVENUE	M	12/11/2015	\$7,750.21
1951	WI DEPT OF REVENUE	M	12/24/2015	\$8,104.35
1952	NICOLET NATIONAL BANK	M	12/24/2015	\$47,478.46
1953	EMPLOYEE BENEFITS CORPORATION	M	12/3/2015	\$2,859.69
1954	EMPLOYEE BENEFITS CORPORATION	M	12/10/2015	\$5,384.96
1955	EMPLOYEE BENEFITS CORPORATION	M	12/17/2015	\$2,337.67
1956	EMPLOYEE BENEFITS CORPORATION	M	12/28/2015	\$2,210.61
1957	EMPLOYEE BENEFITS CORPORATION	M	12/31/2015	\$3,294.72
1958	EMPLOYEE BENEFITS CORPORATION	M	12/31/2015	\$505.05

FORWARD FINANCIAL:

MANUAL CHECKS: \$7,001.25

WIRE TRANSFERS: \$80,907.76

REGULAR CHECKS: \$6,813.70

DIRECT DEPOSITS: \$267,758.72

MANUAL CHECKS:

178	GREAT WEST	M	12/24/2015	\$3,592.55
179	GREAT WEST	M	1/8/2016	\$3,408.70

WIRE TRANSFERS:

201500001	WISCONSIN RETIREMENT SYSTEM	W	12/31/2015	\$20,881.05
201500002	WISCONSIN RETIREMENT SYSTEM	W	12/11/2015	\$19,708.13
201500003	WISCONSIN RETIREMENT SYSTEM	W	12/31/2015	\$10,133.40
201500004	WISCONSIN RETIREMENT SYSTEM	W	12/31/2015	\$10,378.94
201500005	WISCONSIN RETIREMENT SYSTEM	W	12/31/2015	\$122.77
201500006	WISCONSIN RETIREMENT SYSTEM	W	12/31/2015	(\$122.77)
201500007	WISCONSIN RETIREMENT SYSTEM	W	12/24/2015	\$19,806.24

REGULAR CHECKS:

31215	PAYROLL CHECK	R	12/24/2015	\$141.29
31216	PAYROLL CHECK	R	12/24/2015	\$47.15
31217	PAYROLL CHECK	R	12/24/2015	\$56.10
31218	PAYROLL CHECK	R	1/8/2016	\$87.73
31219	PAYROLL CHECK	R	1/8/2016	\$766.97
31220	PAYROLL CHECK	R	1/8/2016	\$518.09
31221	PAYROLL CHECK	R	1/8/2016	\$719.87
31222	PAYROLL CHECK	R	1/8/2016	\$659.38
31223	PAYROLL CHECK	R	1/8/2016	\$31.80
31224	PAYROLL CHECK	R	1/8/2016	\$63.80
31225	AFLAC	R	1/7/2016	\$572.72
31226	COLBY PUBLIC SCH. PENSION PLAN	R	1/7/2016	\$3,148.80

DIRECT DEPOSITS: 900060909 – 900061075 = \$136,298.13

900061076 – 900061245 = \$131,450.59

Check Nbr	Vendor Name	Check Date	Invoice Number	Invoice Desc	PO Number	Invoice Amount	Check Amount
70561	CHULA VISTA RESORT	12/22/2015	CONF #E68143	[POS MAN:PROD] WTEA CONFERENCE ROOM for Dennis Hannan 1 room for Feb 24 & 25, 2016 Tax Exempt	0	164.00	164.00
10 E 800 342 221300 401			GENERAL FUND/INST. STAFF SERV. - TRAINING/EMPLOYEE TRAV			164.00	
70562	CHULA VISTA RESORT	12/22/2015	CONF #E68144	[POS MAN:PROD] WTEA CONFERENCE ROOM for Meghan Walters 1 room for February 24 & 25, 2016 Tax Exempt	0	164.00	164.00
10 E 800 342 221300 401			GENERAL FUND/INST. STAFF SERV. - TRAINING/EMPLOYEE TRAV			164.00	
70563	RUDER WARE, L.L.S.C.	12/22/2015	207785	PROFESSIONAL SERVICES THROUGH 11/30/15	0	940.50	940.50
10 E 800 310 231500 000			GENERAL FUND/BOARD OF ED. LEGAL/PERSONAL SERVICES			940.50	
70564	WEA INSURANCE	12/22/2015	663037	JANUARY 2016 LTD	0	1,772.02	1,772.02
10 E 800 251 120000 000			GENERAL FUND/REGULAR CURRICULUM/INCOME PROTECTION INSUR			33.70	
10 E 800 251 222000 000			GENERAL FUND/EDUCATIONAL MEDIA/INCOME PROTECTION INSURA			41.27	
10 E 800 251 223910 000			GENERAL FUND/READING SPECIALIST/INCOME PROTECTION INSUR			5.87	
10 E 800 251 232100 000			GENERAL FUND/OFFICE OF SUPERINTENDENT/INCOME PROTECTION			46.40	
10 E 800 251 252000 000			GENERAL FUND/FISCAL/INCOME PROTECTION INSURANCE			37.03	
10 E 800 251 253300 000			GENERAL FUND/OPERATION OF BUILDINGS/INCOME PROTECTION I			64.58	
27 L 000 000 811200 000			SPECIAL EDUC./A/P ACCRUAL			144.95	
27 E 100 251 158100 011			SPECIAL EDUC./MULTICATEGORICAL HANDICAPPED/INCOME PROTE			27.32	
27 E 400 251 158100 011			SPECIAL EDUC./MULTICATEGORICAL HANDICAPPED/INCOME PROTE			35.38	
27 E 800 251 156600 011			SPECIAL EDUC./SPEECH/LANGUAGE/INCOME PROTECTION INSURAN			35.83	
27 E 800 251 215000 011			SPECIAL EDUC./PSYCHOLOGICAL SERVICES/INCOME PROTECTION			17.77	
27 E 800 251 223300 011			SPECIAL EDUC./EEN DIRECTOR/INCOME PROTECTION INSURANCE			12.19	
50 E 800 251 257220 000			FOOD SERVICE FUND/FOOD SERVICE-LUNCH PROGRAM/INCOME PRO			51.97	
27 E 200 251 158100 011			SPECIAL EDUC./MULTICATEGORICAL HANDICAPPED/INCOME PROTE			18.68	
10 E 800 251 266000 000			GENERAL FUND/TECHNOLOGY COORD/PROJECTS/INCOME PROTECTIO			21.07	
10 E 800 251 110000 391			GENERAL FUND/ELEMENTARY CURRICULUM/INCOME PROTECTION IN			1.11	
10 E 050 251 110000 000			GENERAL FUND/ELEMENTARY CURRICULUM/INCOME PROTECTION IN			22.46	
10 E 800 251 215000 000			GENERAL FUND/PSYCHOLOGICAL SERVICES/INCOME PROTECTION I			3.39	
10 E 100 251 110000 000			GENERAL FUND/ELEMENTARY CURRICULUM/INCOME PROTECTION IN			226.67	
10 E 100 251 110000 332			GENERAL FUND/ELEMENTARY CURRICULUM/INCOME PROTECTION IN			76.88	
10 E 100 251 110000 365			GENERAL FUND/ELEMENTARY CURRICULUM/INCOME PROTECTION IN			12.93	
10 E 200 251 120000 000			GENERAL FUND/REGULAR CURRICULUM/INCOME PROTECTION INSUR			207.93	
10 E 200 251 141000 000			GENERAL FUND/HEALTH/INCOME PROTECTION INSURANCE			8.32	
10 E 200 251 143000 000			GENERAL FUND/PHYSICAL EDUCATION/INCOME PROTECTION INSUR			12.47	
10 E 100 251 143000 000			GENERAL FUND/PHYSICAL EDUCATION/INCOME PROTECTION INSUR			18.26	
10 E 200 251 122000 141			GENERAL FUND/ENGLISH/INCOME PROTECTION INSURANCE			21.61	
10 E 100 251 122000 141			GENERAL FUND/ENGLISH/INCOME PROTECTION INSURANCE			30.27	

Check Nbr	Vendor Name	Check Date	Invoice Number	Invoice Desc	PO Number	Invoice Amount	Check Amount
10 E 901 251 122000 141				GENERAL FUND/ENGLISH/INCOME PROTECTION INSURANCE		7.75	
10 E 100 251 124000 141				GENERAL FUND/MATHEMATICS/INCOME PROTECTION INSURANCE		9.96	
27 E 800 251 223300 341				SPECIAL EDUC./EEN DIRECTOR/INCOME PROTECTION INSURANCE		1.35	
10 E 100 251 121000 000				GENERAL FUND/ART/INCOME PROTECTION INSURANCE		19.64	
10 E 200 251 121000 000				GENERAL FUND/ART/INCOME PROTECTION INSURANCE		8.93	
10 E 400 251 121000 000				GENERAL FUND/ART/INCOME PROTECTION INSURANCE		8.93	
10 E 400 251 124000 000				GENERAL FUND/MATHEMATICS/INCOME PROTECTION INSURANCE		40.75	
10 E 100 251 125100 000				GENERAL FUND/MUSICAL GENERAL/INCOME PROTECTION INSURANCE		15.04	
10 E 200 251 125400 000				GENERAL FUND/VOCAL MUSIC/INCOME PROTECTION INSURANCE		8.63	
10 E 400 251 125400 000				GENERAL FUND/VOCAL MUSIC/INCOME PROTECTION INSURANCE		8.63	
10 E 200 251 125500 000				GENERAL FUND/INSTRUMENTAL MUSIC/INCOME PROTECTION INSUR		6.24	
10 E 400 251 125500 000				GENERAL FUND/INSTRUMENTAL MUSIC/INCOME PROTECTION INSUR		6.24	
10 E 400 251 126000 000				GENERAL FUND/SCIENCE/INCOME PROTECTION INSURANCE		38.04	
10 E 400 251 127000 000				GENERAL FUND/SOCIAL STUDIES/INCOME PROTECTION INSURANCE		12.93	
10 E 400 251 122000 000				GENERAL FUND/ENGLISH/INCOME PROTECTION INSURANCE		18.77	
10 E 800 251 123000 000				GENERAL FUND/FOREIGN LANGUAGE/INCOME PROTECTION INSURAN		19.37	
10 E 400 251 132000 000				GENERAL FUND/BUSINESS EDUCATION/INCOME PROTECTION INSUR		6.44	
10 E 100 251 132000 000				GENERAL FUND/BUSINESS EDUCATION/INCOME PROTECTION INSUR		3.60	
10 E 200 251 132000 000				GENERAL FUND/BUSINESS EDUCATION/INCOME PROTECTION INSUR		3.60	
10 E 400 251 131000 000				GENERAL FUND/AGRICULTURE/INCOME PROTECTION INSURANCE		10.30	
10 E 200 251 131000 000				GENERAL FUND/AGRICULTURE/INCOME PROTECTION INSURANCE		2.58	
10 E 100 251 241000 000				GENERAL FUND/OFFICE OF PRINCIPAL/INCOME PROTECTION INSU		25.13	
10 E 200 251 241000 000				GENERAL FUND/OFFICE OF PRINCIPAL/INCOME PROTECTION INSU		45.54	
10 E 400 251 241000 000				GENERAL FUND/OFFICE OF PRINCIPAL/INCOME PROTECTION INSU		64.93	
10 E 400 251 135000 000				GENERAL FUND/FAMILY & CONSUMER EC/INCOME PROTECTION INS		3.25	
10 E 200 251 135000 000				GENERAL FUND/FAMILY & CONSUMER EC/INCOME PROTECTION INS		3.25	
10 E 800 251 110000 341				GENERAL FUND/ELEMENTARY CURRICULUM/INCOME PROTECTION IN		9.32	
27 E 100 251 159100 011				SPECIAL EDUC./EEN AIDES/INCOME PROTECTION INSURANCE		12.10	
27 E 200 251 159100 011				SPECIAL EDUC./EEN AIDES/INCOME PROTECTION INSURANCE		40.11	
27 E 400 251 159100 011				SPECIAL EDUC./EEN AIDES/INCOME PROTECTION INSURANCE		25.67	
10 E 400 251 141000 000				GENERAL FUND/HEALTH/INCOME PROTECTION INSURANCE		3.97	
10 E 400 251 143000 000				GENERAL FUND/PHYSICAL EDUCATION/INCOME PROTECTION INSUR		10.20	
27 E 050 251 152000 011				SPECIAL EDUC./EARLY CHILDHOOD/INCOME PROTECTION INSURAN		13.63	
10 E 400 251 136000 000				GENERAL FUND/TECH ED/INCOME PROTECTION INSURANCE		11.68	
10 E 200 251 136000 000				GENERAL FUND/TECH ED/INCOME PROTECTION INSURANCE		1.75	
27 E 400 251 213000 011				SPECIAL EDUC./PUPIL SERVICES - GUIDANCE/INCOME PROTECTI		2.05	
10 E 050 251 241000 000				GENERAL FUND/OFFICE OF PRINCIPAL/INCOME PROTECTION INSU		5.41	

4

Computer

Check(s) For a Total of

3,040.52

Check Nbr	Vendor Name	Check Date	Invoice Number	Invoice Desc	PO Number	Invoice Amount	Check Amount
70565	DAVID W ACALEY	12/30/2015	OFFICIAL	GIRLS VARSITY	0	85.00	85.00
				BASKETBALL 1-4-16			
10 E 400 310 162105 000			GENERAL FUND/GIRLS BASKETBALL/PERSONAL SERVICES			85.00	
70566	AMERICAN WELDING & GAS INC	12/30/2015	03734806	POOL: CARBON	0	108.87	108.87
				DIOXIDE			
10 E 800 411 253300 000			GENERAL FUND/OPERATION OF BUILDINGS/GENERAL SUPPLIES			108.87	
70567	ASSETGENIE INC	12/30/2015	1003332	LCD CABLES, FANS, 2011516006		221.70	221.70
				MOTHERBOARDS			
10 E 800 460 266000 000			GENERAL FUND/TECHNOLOGY COORD/PROJECTS/COMPUTER COMPONE			221.70	
70568		12/30/2015	11/30/15-12/11/15	STW - PINE RIDGE	0	22.50	22.50
				(225 MINUTES)			
27 E 800 185 138200 341			SPECIAL EDUC./VOC ED EEN/SALARY STUDENT WORKERS			22.50	
70569	NANCY BECKER	12/30/2015	DECEMBER 2015	MILEAGE TO	0	41.40	41.40
				SPENCER			
10 E 400 342 222200 000			GENERAL FUND/LMC - INST SERVICE/EMPLOYEE TRAVEL & EXP.			41.40	
70570	BONACKER, LAVINIA	12/30/2015	REIMBURSEMENT	WASB LEGISLATIVE	0	65.55	65.55
				CONFERENCE			
				MILEAGE			
10 E 800 342 231100 000			GENERAL FUND/BOARD OF EDUCATION/EMPLOYEE TRAVEL & EXP.			65.55	
70571	AUDRA BROOKS	12/30/2015	MILEAGE	CESA #10	0	66.70	66.70
				BOOKKEEPERS			
				MEETING			
10 E 800 342 252000 000			GENERAL FUND/FISCAL/EMPLOYEE TRAVEL & EXP.			66.70	
70572	CHARTER COMMUNICATIONS	12/30/2015	ELEMENTARY SCHOOL	1/1/16-1/31/16	0	17.85	53.55
				ACCOUNT #8245 11			
				261 0013295			
10 E 800 358 266000 000			GENERAL FUND/TECHNOLOGY COORD/PROJECTS/ON-LINE COMMUNIC			17.85	
			LITTLE STARS	1/1/16-1/31/16	0	17.85	
				ACCOUNT #8245 11			
				261 0013311			
10 E 800 358 266000 000			GENERAL FUND/TECHNOLOGY COORD/PROJECTS/ON-LINE COMMUNIC			17.85	
			MIDDLE SCHOOL	1/1/16-1/31/16	0	17.85	
				ACCOUNT #8245 11			
				261 0013287			
10 E 800 358 266000 000			GENERAL FUND/TECHNOLOGY COORD/PROJECTS/ON-LINE COMMUNIC			17.85	
70573	COLBY MIDDLE SCHOOL	12/30/2015	SCRIP CARD	LIFEGUARDS	0	270.00	270.00
10 E 200 310 143000 000			GENERAL FUND/PHYSICAL EDUCATION/PERSONAL SERVICES			270.00	
70574	COMPLETE CONTROL, INC.	12/30/2015	SRVCE029170	MATERIAL SALE OF	0	138.73	138.73
				STAINLESS STEEL			

Check Nbr	Vendor Name	Check Date	Invoice Number	Invoice Desc	PO Number	Invoice Amount	Check Amount
				FITTINGS			
10 E 800 411 254300 000				GENERAL FUND/MAINTENANCE-BUILDINGS/GENERAL SUPPLIES		138.73	
70575 DALCO		12/30/2015	2966676	BOWL CLEANER, DEGREASER	0	206.51	206.51
10 E 800 411 253300 000				GENERAL FUND/OPERATION OF BUILDINGS/GENERAL SUPPLIES		206.51	
70576 FRONTIER		12/30/2015	12/16/15-1/15/16	CD/EC FAX	0	26.89	26.89
10 E 800 355 263300 000				GENERAL FUND/PUBLIC INFORMATION/TELEPHONE		26.89	
70577 GENERAL PARTS LLC		12/30/2015	5689736	SERVICE COMBI	0	268.00	268.00
50 E 800 320 257220 000				FOOD SERVICE FUND/FOOD SERVICE-LUNCH PROGRAM/PROPERTY S		268.00	
70578 DIANE HANSON		12/30/2015	12/14/15-12/18/15	RIDE BUS W/STUDENT (5 TRIPS)	0	43.13	43.13
27 E 800 342 256751 341				SPECIAL EDUC./EEN PUPIL TRANSPORTATION/EMPLOYEE TRAVEL		43.13	
70579 HARLAND CLARKE		12/30/2015	70001547185	ACTIVITY ACCOUNT CHECKS	0	257.30	257.30
10 E 800 411 252000 000				GENERAL FUND/FISCAL/GENERAL SUPPLIES		257.30	
70580 HENRICKSON, REGAN E		12/30/2015	12/7/15-12/11/15	RIDE BUS W/STUDENTS (5 TRIPS)	0	34.50	34.50
27 E 800 342 256751 341				SPECIAL EDUC./EEN PUPIL TRANSPORTATION/EMPLOYEE TRAVEL		34.50	
70581 MARY JEAN HORNICK		12/30/2015	12/1/15-12/23/15	RIDE BUS W/STUDENTS (7 TRIPS)	0	60.37	60.37
27 E 800 342 256751 341				SPECIAL EDUC./EEN PUPIL TRANSPORTATION/EMPLOYEE TRAVEL		60.37	
70582 J H LARSON COMPANY		12/30/2015	S101094586.001	WIRE, MARKING TAPES	0	129.11	130.02
10 E 800 411 254300 000				GENERAL FUND/MAINTENANCE-BUILDINGS/GENERAL SUPPLIES		129.11	
			S101096315.001	UTILITY BOX ---- COVER & CONDUIT RETURNED	0	0.91	
10 E 800 411 254300 000				GENERAL FUND/MAINTENANCE-BUILDINGS/GENERAL SUPPLIES		0.91	
70583 J W PEPPER & SON INC		12/30/2015	07708376	Solo and Ensemble Music	5021516071	202.38	207.33
10 E 200 411 125500 000				GENERAL FUND/INSTRUMENTAL MUSIC/GENERAL SUPPLIES		202.38	
			07709701	Solo and Ensemble Music	5021516071	4.95	
10 E 200 411 125500 000				GENERAL FUND/INSTRUMENTAL MUSIC/GENERAL SUPPLIES		4.95	
70584 DENNIS OR RHONDA KIEFFER		12/30/2015	DECEMBER 2015	MILEAGE TO ABBY	0	53.76	53.76

Check Nbr	Vendor Name	Check Date	Invoice Number	Invoice Desc	PO Number	Invoice Amount	Check Amount
				CHRISTIAN ACADEMY			
10 E 800 341 256730 000				GENERAL FUND/PARENT TRANSPORTATION/PUPIL TRAVEL		53.76	
70585 KOLDEN, STEVEN E		12/30/2015	DECEMBER 2015	MILEAGE	0	114.43	114.43
				REIMBURSEMENT			
10 E 800 342 232100 000				GENERAL FUND/OFFICE OF SUPERINTENDENT/EMPLOYEE TRAVEL &		114.43	
70586 GARY G KOY		12/30/2015	OFFICIAL	GIRLS VARSITY	0	85.00	85.00
				BASKETBALL 1-4-16			
10 E 400 310 162105 000				GENERAL FUND/GIRLS BASKETBALL/PERSONAL SERVICES		85.00	
70587 KURT OR HEATHER KULAS		12/30/2015	DECEMBER 2015	MILEAGE TO ABBY	0	26.88	26.88
				CHRISTIAN ACADEMY			
10 E 800 341 256730 000				GENERAL FUND/PARENT TRANSPORTATION/PUPIL TRAVEL		26.88	
70588 LARSEN, NATHAN M		12/30/2015	REIMBURSEMENT	FUEL	0	45.25	45.25
10 E 800 348 221300 000				GENERAL FUND/INST. STAFF SERV. - TRAINING/VEHICLE FUEL		45.25	
70589 [REDACTED]		12/30/2015	11/30/15-12/11/15	STW - BACK TO	0	52.40	52.40
				BLISS (786			
				MINUTES)			
27 E 800 185 138200 341				SPECIAL EDUC./VOC ED EEN/SALARY STUDENT WORKERS		52.40	
70590 MEHLBERG, GREGORY G		12/30/2015	/1/	ANTI GLARE SVA	0	200.00	200.00
				DISPLAY PANEL			
10 E 800 440 232100 000				GENERAL FUND/OFFICE OF SUPERINTENDENT/NON-CAPITAL EQUIP		200.00	
70591 MEYER LUMBER SUPPLY, INC.		12/30/2015	14458 1	KITCHEN FAUCET &	0	47.57	47.57
				FAUCET HOOK-UPS			
10 E 800 411 254300 000				GENERAL FUND/MAINTENANCE-BUILDINGS/GENERAL SUPPLIES		47.57	
70592 MISSISSIPPI WELDERS SUPPLY CO		12/30/2015	2144437	WELDING SUPPLIES:	0	1,021.41	1,021.41
				SPEEDSHOP,			
				HELMETS, TAPE			
				MEASURE, FLINTS,			
				WRENCH SET, SHEET			
				METAL GAGE,			
				BATTERIES, HEAD			
				GEAR, ETC			
10 E 400 411 136000 000				GENERAL FUND/TECH ED/GENERAL SUPPLIES		510.78	
10 E 400 440 136000 000				GENERAL FUND/TECH ED/NON-CAPITAL EQUIPMENT		510.63	
70593 [REDACTED]		12/30/2015	11/30/15--12/11/15	STW PINE RIDGE	0	31.70	31.70
				(317 MINUTES)			
27 E 800 185 138200 341				SPECIAL EDUC./VOC ED EEN/SALARY STUDENT WORKERS		31.70	
70594 PITNEY BOWES		12/30/2015	9864639-DC15	DISTRICT OFFICE	0	135.00	792.00
10 E 800 571 263300 000				GENERAL FUND/PUBLIC INFORMATION/EQUIPMENT RENTAL		135.00	
			9864647-DC15	HIGH SCHOOL	0	522.00	

Check Nbr	Vendor Name	Check Date	Invoice Number	Invoice Desc	PO Number	Invoice Amount	Check Amount
10 E 800 571 263300 000				GENERAL FUND/PUBLIC INFORMATION/EQUIPMENT RENTAL		522.00	
			9864654-DC15	ELEMENTARY SCHOOL	0	135.00	
10 E 800 571 263300 000				GENERAL FUND/PUBLIC INFORMATION/EQUIPMENT RENTAL		135.00	
70595	QUILL CORPORATION	12/30/2015	1662717	EXPO MARKERS, BOOK TAPE	0	447.55	548.29
10 E 100 411 110000 000				GENERAL FUND/ELEMENTARY CURRICULUM/GENERAL SUPPLIES		447.55	
			1698415	SCOTCH TAPE	0	100.74	
10 E 100 411 110000 000				GENERAL FUND/ELEMENTARY CURRICULUM/GENERAL SUPPLIES		100.74	
70596	DEPART OF PUBLIC INSTRUCTION	12/30/2015	255-0000001976	2015-2016 - HS/MS/CE - 435 - WISCAT Client Software Site Renewal	2001516053	600.00	600.00
10 E 100 435 222200 000				GENERAL FUND/LMC - INST SERVICE/PROGRAMMED COMPUTER SOF		200.00	
10 E 200 435 222200 000				GENERAL FUND/LMC - INST SERVICE/PROGRAMMED COMPUTER SOF		200.00	
10 E 400 435 222200 000				GENERAL FUND/LMC - INST SERVICE/PROGRAMMED COMPUTER SOF		200.00	
70597	RMM SOLUTIONS INC	12/30/2015	51648	REMOTE SUPPORT	0	142.50	142.50
10 E 800 310 266000 000				GENERAL FUND/TECHNOLOGY COORD/PROJECTS/PERSONAL SERVICE		142.50	
70598	CRISTINA SQUERF	12/30/2015	11/30/15-12/11/15	STW - DISTRICT OFFICE (1200 MINUTES)	0	120.00	120.00
27 E 800 185 138200 341				SPECIAL EDUC./VOC ED EEN/SALARY STUDENT WORKERS		120.00	
70599	SCHOLASTIC BOOK CLUB INC	12/30/2015	T26626600#	BOOKS - MICHELE HAGEN	0	30.00	30.00
10 E 100 411 122000 141				GENERAL FUND/ENGLISH/GENERAL SUPPLIES		15.00	
10 E 100 439 122000 141				GENERAL FUND/ENGLISH/OTHER MEDIA		15.00	
70600	SCHOLASTIC INC	12/30/2015	69962161	BOOKS	0	50.00	50.00
10 E 100 411 122000 141				GENERAL FUND/ENGLISH/GENERAL SUPPLIES		25.00	
10 E 100 439 122000 141				GENERAL FUND/ENGLISH/OTHER MEDIA		25.00	
70601	SPROUTS, PAUL	12/30/2015	11/30/15-12/11/15	STW - ABBOTSFORD LIBRARY (685 MINUTES)	0	68.51	68.51
27 E 800 185 138200 341				SPECIAL EDUC./VOC ED EEN/SALARY STUDENT WORKERS		68.51	
70602	GERALD STURTZ	12/30/2015	OFFICIAL	GIRLS VARSITY BASKETBALL 1-4-16	0	85.00	85.00
10 E 400 310 162105 000				GENERAL FUND/GIRLS BASKETBALL/PERSONAL SERVICES		85.00	
70603	TDS TELECOM	12/30/2015	12/22/15-1/21/16	NEILLSVILLE	0	108.50	108.50
10 E 900 355 263300 000				GENERAL FUND/PUBLIC INFORMATION/TELEPHONE		108.50	

Check Nbr	Vendor Name	Check Date	Invoice Number	Invoice Desc	PO Number	Invoice Amount	Check Amount
70604	VERIZON WIRELESS	12/30/2015	9757330751	CELL PHONES	0	75.56	75.56
10 E 800 355 263300 000				GENERAL FUND/PUBLIC INFORMATION/TELEPHONE		75.56	
70605	VERIZON WIRELESS	12/30/2015	9757330752	WIRELESS/MIFIS	0	386.66	386.66
10 E 800 355 263300 000				GENERAL FUND/PUBLIC INFORMATION/TELEPHONE		386.66	
70606	XXXXXXXXXX	12/30/2015	12/14/15-12/17/15	STW - WISCO MILLING (720 MINUTES)	0	72.00	144.00
27 E 800 185 138200 341				SPECIAL EDUC./VOC ED EEN/SALARY STUDENT WORKERS		72.00	
			12/7/15-12/10/15	STW - WISCO MILLING (720 MINUTES)	0	72.00	
27 E 800 185 138200 341				SPECIAL EDUC./VOC ED EEN/SALARY STUDENT WORKERS		72.00	
70607	WE ENGERGIES	12/30/2015	ADAMS ST HOUSE	11/12/15-12/15/15	0	49.90	747.56
10 E 800 331 253300 000				GENERAL FUND/OPERATION OF BUILDINGS/GAS FOR HEAT		49.90	
			DISTRICT OFFICE	11/12/15-12/15/15	0	686.11	
10 E 800 331 253300 000				GENERAL FUND/OPERATION OF BUILDINGS/GAS FOR HEAT		686.11	
			MIDDLE SCHOOL	11/12/15-12/15/15	0	11.55	
10 E 800 331 253300 000				GENERAL FUND/OPERATION OF BUILDINGS/GAS FOR HEAT		11.55	
70608	XCEL ENERGY	12/30/2015	AUTO PROTECTIVE LGT	11/15/15-12/14/15	0	46.72	705.30
10 E 800 336 253300 000				GENERAL FUND/OPERATION OF BUILDINGS/ELECTRICITY OTHER T		46.72	
			NEILLSVILLE	11/15/15-12/16/15	0	658.58	
10 E 800 336 253300 000				GENERAL FUND/OPERATION OF BUILDINGS/ELECTRICITY OTHER T		658.58	
70609	SAM ZIER	12/30/2015	OFFICIAL	GIRLS JV	0	40.00	40.00
				BASKETBALL 1-4-16			
10 E 400 310 162105 000				GENERAL FUND/GIRLS BASKETBALL/PERSONAL SERVICES		40.00	

45 Computer Check(s) For a Total of 8,630.33

Check Nbr	Vendor Name	Check Date	Invoice Number	Invoice Desc	PO Number	Invoice Amount	Check Amount
70610	MARK J HEITING	01/04/2016	OFFICIAL	VARSITY GIRLS	0	85.00	85.00
				BASKETBALL 1-4-16			
10 E 400 310 162105 000				GENERAL FUND/GIRLS BASKETBALL/PERSONAL SERVICES		85.00	
				1 Computer	Check(s) For a Total of		85.00

Check Nbr	Vendor Name	Check Date	Invoice Number	Invoice Desc	PO Number	Invoice Amount	Check Amount
70611	SHELL	01/05/2016	79387155512	GAS CHARGES DEC 2015 ACCT: 079387155	0	159.74	159.74
10 E 800 348 221300 000				GENERAL FUND/INST. STAFF SERV. - TRAINING/VEHICLE FUEL		35.15	
10 E 800 348 253300 000				GENERAL FUND/OPERATION OF BUILDINGS/VEHICLE FUEL		8.12	
27 E 800 348 138200 341				SPECIAL EDUC./VOC ED EEN/VEHICLE FUEL		42.07	
10 E 400 348 213000 000				GENERAL FUND/PUPIL SERVICES - GUIDANCE/VEHICLE FUEL		21.06	
10 E 400 348 162210 000				GENERAL FUND/FOOTBALL/VEHICLE FUEL		33.30	
10 E 800 348 266000 000				GENERAL FUND/TECHNOLOGY COORD/PROJECTS/VEHICLE FUEL		20.04	
			1	Computer	Check(s) For a Total of		159.74

Check Nbr	Vendor Name	Check Date	Invoice Number	Invoice Desc	PO Number	Invoice Amount	Check Amount
70612	CHARTER COMMUNICATIONS	01/06/2016	1/1/16-1/31/16	OPTICAL ETHR	0	711.90	711.90
				INTRA			
10 E 800 358 266000 000			GENERAL FUND/TECHNOLOGY COORD/PROJECTS/ON-LINE COMMUNIC			711.90	
70613	CITY OF COLBY	01/06/2016	ADAMS ST HOUSE	11/16/15-12/15/15	0	18.00	2,812.60
10 E 800 337 253300 000			GENERAL FUND/OPERATION OF BUILDINGS/WATER SERVICE			18.00	
			CONCESSION STAND	11/16/15-12/15/15	0	57.00	
10 E 800 337 253300 000			GENERAL FUND/OPERATION OF BUILDINGS/WATER SERVICE			57.00	
			DISTRICT ED CENTER	11/16/15-12/15/15	0	31.00	
10 E 800 337 253300 000			GENERAL FUND/OPERATION OF BUILDINGS/WATER SERVICE			31.00	
			ELEMENTARY SCHOOL	11/16/15-12/15/15	0	690.55	
10 E 800 337 253300 000			GENERAL FUND/OPERATION OF BUILDINGS/WATER SERVICE			690.55	
			HIGH SCHOOL	11/16/15-12/15/15	0	1,697.55	
10 E 800 337 253300 000			GENERAL FUND/OPERATION OF BUILDINGS/WATER SERVICE			1,697.55	
			MIDDLE SCHOOL	11/16/15-12/15/15	0	318.50	
10 E 800 337 253300 000			GENERAL FUND/OPERATION OF BUILDINGS/WATER SERVICE			318.50	
70614	CITY OF NEILLSVILLE	01/06/2016	9/14/15-12/14/15	NEILLSVILLE	0	378.45	378.45
10 E 900 337 253300 000			GENERAL FUND/OPERATION OF BUILDINGS/WATER SERVICE			378.45	
70615	FRONTIER	01/06/2016	12/28/15-01/27/16	ACCOUNT	0	118.06	118.06
			#262-159-0899-0904				
			14-5				
10 E 800 355 263300 000			GENERAL FUND/PUBLIC INFORMATION/TELEPHONE			118.06	
70616	JOHNSON, JULIE A	01/06/2016	12/2/15-12/22/15	SOAR MILEAGE	0	115.20	115.20
27 E 800 341 256751 011			SPECIAL EDUC./EEN PUPIL TRANSPORTATION/PUPIL TRAVEL			115.20	
70617	XXXXXXXXXXXX	01/06/2016	12/14/15-12/25/15	STUDENT KITCHEN	0	28.00	28.00
			WORKER (420				
			MINUTES)				
27 E 800 185 138200 341			SPECIAL EDUC./VOC ED EEN/SALARY STUDENT WORKERS			28.00	
70618	XXXXXXXXXXXX	01/06/2016	12/14/15-12/25/15	KITCHEN STUDENT	0	40.61	40.61
			WORKER (406				
			MINUTES)				
27 E 800 185 138200 341			SPECIAL EDUC./VOC ED EEN/SALARY STUDENT WORKERS			40.61	
70619	XXXXXXXXXXXX	01/06/2016	11/14/15-12/25/15	STUDENT WORKER	0	20.30	20.30
			KITCHEN (203				
			MINUTES)				
27 E 800 185 138200 341			SPECIAL EDUC./VOC ED EEN/SALARY STUDENT WORKERS			20.30	
70620	SAINT MARY'S UNIVERSITY	01/06/2016	K01 00 2256	TUITION - STEVEN	0	280.00	280.00
				KOLDEN			

Check Nbr	Vendor Name	Check Date	Invoice Number	Invoice Desc	PO Number	Invoice Amount	Check Amount
10 E 800 291 232100 000				GENERAL FUND/OFFICE OF SUPERINTENDENT/COLLEGE CREDIT RE		280.00	
70621	SCHINDLER ELEVATOR CORPORATION	01/06/2016	8104178102	QUARTERLY BILLING 1/1/16-3/31/16	0	365.79	365.79
10 E 900 320 254300 000				GENERAL FUND/MAINTENANCE-BUILDINGS/PROPERTY SERVICE		365.79	
70622	WHSFA STATE OFFICE	01/06/2016	EMILY MUELLER	RENEWAL OF JUDGE CERTIFICATE	0	6.00	42.50
10 E 800 310 161339 000				GENERAL FUND/FORENSICS/PERSONAL SERVICES		6.00	
			JESSICA SWEDA	TRAINING NEW JUDGE	0	36.50	
10 E 800 310 161339 000				GENERAL FUND/FORENSICS/PERSONAL SERVICES		36.50	
70623	WIS SCHOOL COUNSELORS ASSN	01/06/2016	DONNA M SCHMIDT	PROFESSIONAL MEMBERSHIP FOR THE PERIOD OF NOVEMBER 2015 THROUGH OCTOBER 2016	0	70.00	70.00
10 E 100 940 213000 000				GENERAL FUND/PUPIL SERVICES - GUIDANCE/DUES & FEES		70.00	

12 Computer Check(s) For a Total of 4,983.41

Check Nbr	Vendor Name	Check Date	Invoice Number	Invoice Desc	PO Number	Invoice Amount	Check Amount
70624	[REDACTED]	01/08/2016	12/14/15-12/25/15	STW - PINERIDGE - 210 MINUTES	0	21.00	21.00
27 E 800 185 138200 341				SPECIAL EDUC./VOC ED EEN/SALARY STUDENT WORKERS		21.00	
70625	MICHAEL OR SALLY JAHNKE	01/08/2016	10/22/15-12/23/15	MILES TO ABBY CHRISTIAN ACADEMY	0	96.26	96.26
10 E 800 341 256730 000				GENERAL FUND/PARENT TRANSPORTATION/PUPIL TRAVEL		96.26	
70626	[REDACTED]	01/08/2016	REPLACEMENT CHECK	FOR CHECK #68450 DATED 2/3/15 THAT WAS NOT CASHED	0	72.00	72.00
27 E 800 185 138200 341				SPECIAL EDUC./VOC ED EEN/SALARY STUDENT WORKERS		72.00	
70627	KEEP	01/08/2016	REGISTRATION	JIM HAGEN	0	100.00	100.00
10 E 200 291 241000 000				GENERAL FUND/OFFICE OF PRINCIPAL/COLLEGE CREDIT REIMBUR		100.00	
70628	PAUL KNETTER	01/08/2016	OFFICIAL	GIRLS C-TEAM BASKETBALL 1-15-16	0	40.00	40.00
10 E 400 310 162105 000				GENERAL FUND/GIRLS BASKETBALL/PERSONAL SERVICES		40.00	
70629	[REDACTED]	01/08/2016	12/14/15-12/25/15	STW - BACK TO BLISS - 623 MINUTES	0	41.53	41.53
27 E 800 185 138200 341				SPECIAL EDUC./VOC ED EEN/SALARY STUDENT WORKERS		41.53	
70630	MARSHFIELD CLINIC	01/08/2016	8-008-730	EMPLOYMENT PHYSICALS	0	135.90	135.90
10 E 800 310 264500 000				GENERAL FUND/STAFF HEALTH SERVICES/PERSONAL SERVICES		85.70	
50 E 800 310 257220 000				FOOD SERVICE FUND/FOOD SERVICE-LUNCH PROGRAM/PERSONAL S		50.20	
70631	JAYME OR KIM MARTEN	01/08/2016	12/1/15-12/23/15	MILES TO ABBY CHRISTIAN ACADEMY	0	80.64	155.52
10 E 800 341 256730 000				GENERAL FUND/PARENT TRANSPORTATION/PUPIL TRAVEL		80.64	
			NOV 2015	MILES TO ABBY CHRISTIAN ACADEMY	0	74.88	
10 E 800 341 256730 000				GENERAL FUND/PARENT TRANSPORTATION/PUPIL TRAVEL		74.88	
70632	[REDACTED]	01/08/2016	12/14/15--12/25/15	STW - PINE RIDGE - 169 MINUTES	0	16.91	16.91
27 E 800 185 138200 341				SPECIAL EDUC./VOC ED EEN/SALARY STUDENT WORKERS		16.91	
70633	[REDACTED]	01/08/2016	12/14/15-12/25/15	STW - DISTRICT OFFICE - 870 MINUTES	0	87.00	87.00
27 E 800 185 138200 341				SPECIAL EDUC./VOC ED EEN/SALARY STUDENT WORKERS		87.00	
70634	[REDACTED]	01/08/2016	REPLACEMENT CHECK	FOR CHECK #69147 DATED 5/18/15	0	33.90	33.90

Check Nbr	Vendor Name	Check Date	Invoice Number	Invoice Desc	PO Number	Invoice Amount	Check Amount
				THAT WAS NOT CASHED			
27 E 800 185 138200 341				SPECIAL EDUC./VOC ED EEN/SALARY STUDENT WORKERS		33.90	
70635	PROFFER, PAUL	01/08/2016	12/14/15-12/25/15	STW - ABBOTSFORD LIBRARY - 545 MINUTES	0	54.50	54.50
27 E 800 185 138200 341				SPECIAL EDUC./VOC ED EEN/SALARY STUDENT WORKERS		54.50	
70636	VOGEL, ANDREW	01/08/2016	12/21/15-12/22/15	STW - WISCO - 370 MINUTES	0	37.01	37.01
27 E 800 185 138200 341				SPECIAL EDUC./VOC ED EEN/SALARY STUDENT WORKERS		37.01	
70637	WOOWIND BRASSWIND	01/08/2016	ARINV29154324	XTRAFLEX DUET LED MUSIC LIGHTS	5021516070	299.85	299.85
10 E 200 411 125500 000				GENERAL FUND/INSTRUMENTAL MUSIC/GENERAL SUPPLIES		149.92	
10 E 400 411 125500 000				GENERAL FUND/INSTRUMENTAL MUSIC/GENERAL SUPPLIES		149.93	
			14	Computer	Check(s) For a Total of		1,191.38

Check Nbr	Vendor Name	Check Date	Invoice Number	Invoice Desc	PO Number	Invoice Amount	Check Amount
70638	HILTON MADISON MONONA TERRACE	01/08/2016	MELISSA WAVRUNEK	CONFIRMATION #3189398187 1 ROOM FOR FEB. 16 & 17, 2016 TAX EXEMPT 2/17/15 - 2/19/15	0	276.00	276.00
10 E 200 342 213000 000			GENERAL FUND/PUPIL SERVICES -	GUIDANCE/EMPLOYEE TRAVEL		276.00	
70639	WIS SCHOOL COUNSELORS ASSN	01/08/2016	2016 CONFERENCE	REGISTRATION -- MELISSA WAVRUNEK	0	130.00	130.00
10 E 200 310 213000 000			GENERAL FUND/PUPIL SERVICES -	GUIDANCE/PERSONAL SERVICE		130.00	
2	Computer		Check(s) For a Total of				406.00

Check Nbr	Vendor Name	Check Date	Invoice Number	Invoice Desc	PO Number	Invoice Amount	Check Amount
70640	ADVANCED DISPOSAL	01/18/2016	M10000819324	DEC 2015 GARBAGE REMOVAL	0	699.67	699.67
10 E 800 320 253300 000				GENERAL FUND/OPERATION OF BUILDINGS/PROPERTY SERVICE		699.67	
70641	AMERICAN WELDING & GAS INC	01/18/2016	03760587	CYLINDER RENTALS	0	211.56	249.43
10 E 800 411 253300 000				GENERAL FUND/OPERATION OF BUILDINGS/GENERAL SUPPLIES		211.56	
			03760974	POOL: CYLINDER RENTAL	0	37.87	
10 E 800 411 253300 000				GENERAL FUND/OPERATION OF BUILDINGS/GENERAL SUPPLIES		37.87	
70642	VILLAGE OF DORCHESTER/FAYE AMO	01/18/2016	STEP	STEP HOURS WORKED: 43 HRS	0	311.75	311.75
80 E 800 310 232200 000				COMMUNITY SERVICE FUND/COMMUNITY RELATIONS/PERSONAL SER		311.75	
70643	BATTERIES PLUS+	01/18/2016	069-110858-01	HS THEATER BULBS	0	263.40	263.40
10 E 800 411 253300 000				GENERAL FUND/OPERATION OF BUILDINGS/GENERAL SUPPLIES		263.40	
70644	MARLENE ROBINSON BEDNAR	01/18/2016	DECEMBER 2015	PUPIL HEALTH SERVICES 11 HOURS AT \$26.00@	0	286.00	286.00
10 E 800 310 214000 000				GENERAL FUND/PUPIL HEALTH SERVICES/PERSONAL SERVICES		286.00	
70645	VILLAGE OF UNITY/JANET BLOCK	01/18/2016	STEP	STEP HOURS WORKED: 44	0	319.00	319.00
80 E 800 310 232200 000				COMMUNITY SERVICE FUND/COMMUNITY RELATIONS/PERSONAL SER		319.00	
70646	CITY OF COLBY/JEAN BRUNKER	01/18/2016	STEP	STEP HOURS WORKED: 38.75	0	280.94	280.94
80 E 800 310 232200 000				COMMUNITY SERVICE FUND/COMMUNITY RELATIONS/PERSONAL SER		280.94	
70647	BURNETT TRANSIT, INC.	01/18/2016	1198.2 MILES	COLBY SCHOOL DISTRICT SHORT BUS ROUTE - DECEMBER 2015	0	742.88	71,889.97
10 E 800 341 256710 000				GENERAL FUND/FLEET PUPIL TRANSPORTATION/PUPIL TRAVEL		742.88	
			5446	10 REGULAR BUS ROUTES	0	65,582.20	
10 E 800 341 256710 000				GENERAL FUND/FLEET PUPIL TRANSPORTATION/PUPIL TRAVEL		65,582.20	
			5449	MEDFORD SOAR STUDENTS	0	1,040.00	
27 E 800 341 256751 011				SPECIAL EDUC./EEN PUPIL TRANSPORTATION/PUPIL TRAVEL		1,040.00	
			DECEMBER 2015	COLBY SCHOOL BUS ROUTE - 17 DAYS	0	4,524.89	
10 E 800 341 256710 000				GENERAL FUND/FLEET PUPIL TRANSPORTATION/PUPIL TRAVEL		4,524.89	
70648	BUSHMAN DAIRY DISTRIBUTORS	01/18/2016	L-243109	MILK	0	15.00	15.00

Check Nbr	Vendor Name	Check Date	Invoice Number	Invoice Desc	PO Number	Invoice Amount	Check Amount
50 E 800 415 257220 000				FOOD SERVICE FUND/FOOD SERVICE-LUNCH PROGRAM/FOOD		15.00	
70649 CESA #10		01/18/2016	5409	AUDIOLOGY	0	500.00	500.00
27 E 800 386 436610 019				SPECIAL EDUC./CESA HEARING SERV./PAYMENT TO CESA		500.00	
70650 CESA #10		01/18/2016	5456	MSDS ONLINE PARTICIPATION	0	400.00	400.00
10 E 800 386 253300 000				GENERAL FUND/OPERATION OF BUILDINGS/PAYMENT TO CESA		400.00	
70651 CESA #10		01/18/2016	FALL 2015	STUDENT COURSE COSTS	0	11,233.25	11,233.25
10 E 800 358 266000 000				GENERAL FUND/TECHNOLOGY COORD/PROJECTS/ON-LINE COMMUNIC		101.32	
10 E 800 386 431124 000				GENERAL FUND/TUITION DL MATH/PAYMENT TO CESA		514.38	
10 E 800 386 431122 000				GENERAL FUND/TUITION DL ENGLISH/PAYMENT TO CESA		5,356.28	
10 E 800 386 431132 000				GENERAL FUND/TUITION DL BUS.EDUC./PAYMENT TO CESA		1,168.38	
10 E 800 386 431134 000				GENERAL FUND/TUITION DL HEALTH OCCUP./PAYMENT TO CESA		1,568.81	
10 E 800 386 431123 000				GENERAL FUND/TUITION DL FOREIGN LANG/PAYMENT TO CESA		2,524.08	
70652 ABBYCOLBY CROSSINGS CHAMBER OF		01/18/2016	187	STEVEN KOLDEN - ASSOCIATE	0	125.00	125.00
10 E 800 940 232100 000				GENERAL FUND/OFFICE OF SUPERINTENDENT/DUES & FEES		125.00	
70653 CONCOURSE HOTEL		01/18/2016	CONF #523090	1 ROOM FOR FEB 3 & 4, 2016 MONICA TESMER (& CHRISIE WRIGHT)	0	244.00	244.00
10 E 800 342 221300 395				GENERAL FUND/INST. STAFF SERV. - TRAINING/EMPLOYEE TRAV		244.00	
70654 COUNTY MARKET ACCOUNT #6017		01/18/2016	0018	CELERY, ONIONS	1011516007	3.12	153.59
50 E 800 415 257220 000				FOOD SERVICE FUND/FOOD SERVICE-LUNCH PROGRAM/FOOD		3.12	
			0026	DAIRY, SUGAR, STORAGE BAGS	0	17.90	
10 E 400 411 131000 000				GENERAL FUND/AGRICULTURE/GENERAL SUPPLIES		17.90	
			0112	DISH BRUSHES, RICE	1011516007	24.69	
50 E 800 415 257220 000				FOOD SERVICE FUND/FOOD SERVICE-LUNCH PROGRAM/FOOD		21.15	
50 E 800 419 257220 000				FOOD SERVICE FUND/FOOD SERVICE-LUNCH PROGRAM/OTHER SUPP		3.54	
			4075	POPCORN, CRACKERS, CUPS, PUNCH	0	23.46	
27 E 100 415 158100 341				SPECIAL EDUC./MULTICATEGORICAL HANDICAPPED/FOOD		23.46	
			6875	GROCERY/KITCHEN ITEMS	6001516066	63.73	
27 E 400 415 158100 341				SPECIAL EDUC./MULTICATEGORICAL HANDICAPPED/FOOD		63.73	
			6922	DISTILLED WATER	0	5.94	

Check Nbr	Vendor Name	Check Date	Invoice Number	Invoice Desc	PO Number	Invoice Amount	Check Amount
10 E 800 411 253300 000				GENERAL FUND/OPERATION OF BUILDINGS/GENERAL SUPPLIES		5.94	
			7396	MEATS	0	14.75	
10 E 400 411 131000 000				GENERAL FUND/AGRICULTURE/GENERAL SUPPLIES		14.75	
70655	COUNTY MARKET - F&CE ACCT 8007	01/18/2016	DECEMBER 2015	Groceries for Basic Foods, Family Foods, Food and Fitness, and 5th grade FACE.	5021516037	177.84	177.84
10 E 400 415 135000 000				GENERAL FUND/FAMILY & CONSUMER EC/FOOD		177.84	
70656	CRC LUMBER LLC	01/18/2016	44702	PLEXI	0	53.10	470.60
50 E 800 320 257220 000				FOOD SERVICE FUND/FOOD SERVICE-LUNCH PROGRAM/PROPERTY S		53.10	
			44703	DOOR CLOSERS	0	222.50	
10 E 800 411 254300 000				GENERAL FUND/MAINTENANCE-BUILDINGS/GENERAL SUPPLIES		222.50	
			44835	OAK VENEER	0	195.00	
10 E 800 411 254300 000				GENERAL FUND/MAINTENANCE-BUILDINGS/GENERAL SUPPLIES		195.00	
70657	CTL COMPANY, INC.	01/18/2016	S1985466.002	MOPS	0	84.00	84.00
10 E 800 411 253300 000				GENERAL FUND/OPERATION OF BUILDINGS/GENERAL SUPPLIES		84.00	
70658	VIL OF DORCHESTER/AGNES DANEN	01/18/2016	STEP	STEP HOURS WORKED: 52.75	0	382.44	382.44
80 E 800 310 232200 000				COMMUNITY SERVICE FUND/COMMUNITY RELATIONS/PERSONAL SER		382.44	
70659	DAVID'S SNOWPLOWING	01/18/2016	DEC 2015	SNOWPLOWING	0	60.00	60.00
10 E 900 320 253200 000				GENERAL FUND/OPERATION-SITES/PROPERTY SERVICE		60.00	
70660	DEAN FOODS OF WISCONSIN	01/18/2016	DEC 2015	MILK	0	3,921.10	3,921.10
50 E 800 415 257220 000				FOOD SERVICE FUND/FOOD SERVICE-LUNCH PROGRAM/FOOD		3,921.10	
70661	DEPT SAFETY & PROFESSIONAL SER	01/18/2016	395048	PERMIT TO OPERATE FEES (ELEMENTARY BOILERS)	0	150.00	150.00
10 E 800 940 253300 000				GENERAL FUND/OPERATION OF BUILDINGS/DUES & FEES		150.00	
70662	DEPT SAFETY & PROFESSIONAL SER	01/18/2016	395098	PERMIT TO OPERATE FEE (NEILLSVILLE ELEVATOR)	0	50.00	50.00
10 E 900 940 253300 000				GENERAL FUND/OPERATION OF BUILDINGS/DUES & FEES		50.00	
70663	VIL DORCH/SHARON ELLENBECKER	01/18/2016	STEP	STEP HOURS WORKED: 31.50	0	228.38	228.38
80 E 800 310 232200 000				COMMUNITY SERVICE FUND/COMMUNITY RELATIONS/PERSONAL SER		228.38	
70664	E.O. JOHNSON CO. INC.	01/18/2016	18114334	COPIES & OVERAGE	0	6,212.95	6,212.95

Check Nbr	Vendor Name	Check Date	Invoice Number	Invoice Desc	PO Number	Invoice Amount	Check Amount
10 E 800 411 258400 000				GENERAL FUND/COPYING/DUPLICATING/GENERAL SUPPLIES		4,970.36	
27 E 800 411 223300 341				SPECIAL EDUC./EEN DIRECTOR/GENERAL SUPPLIES		869.81	
27 E 400 411 158100 341				SPECIAL EDUC./MULTICATEGORICAL HANDICAPPED/GENERAL SUPP		372.78	
70665	CITY OF COLBY/MARY FIRNSTAHL	01/18/2016	STEP	STEP HOURS	0	402.38	402.38
				WORKED: 55.5			
80 E 800 310 232200 000				COMMUNITY SERVICE FUND/COMMUNITY RELATIONS/PERSONAL SER		402.38	
70666	FIRE & SAFETY EQUIPMENT IV INC	01/18/2016	47960	ANNUAL FIRE	0	983.29	983.29
				EXTINGUISHER			
				SERVICE			
10 E 800 320 254300 000				GENERAL FUND/MAINTENANCE-BUILDINGS/PROPERTY SERVICE		983.29	
70667	FOLLETT SCHOOL SOLUTIONS, INC	01/18/2016	791251F-5	EBook	2001516052	23.97	23.97
10 E 200 431 222200 000				GENERAL FUND/LMC - INST SERVICE/AUDIO-VISUAL MEDIA		23.97	
70668	FOLLETT SCHOOL SOLUTIONS, INC	01/18/2016	302083F-0	2015-2016 - 432 -	2001516058	295.00	1,063.12
				MS - Follett E-Z			
				TITLES			
10 E 200 431 222200 000				GENERAL FUND/LMC - INST SERVICE/AUDIO-VISUAL MEDIA		295.00	
			302088F-4	2015-2016 - 432 -	2001516058	768.12	
				MS - Follett E-Z			
				TITLES			
10 E 200 432 222200 000				GENERAL FUND/LMC - INST SERVICE/LIBRARY BOOKS		768.12	
70669	G&K SERVICES INC	01/18/2016	1016337314	SHOP COATS &	0	65.75	136.40
				TOWELS			
10 E 800 320 253300 000				GENERAL FUND/OPERATION OF BUILDINGS/PROPERTY SERVICE		65.75	
			1016343129	SHOP COATS &	0	70.65	
				TOWELS			
10 E 800 320 253300 000				GENERAL FUND/OPERATION OF BUILDINGS/PROPERTY SERVICE		70.65	
70670	W W GRAINGER INC	01/18/2016	9919437567	WATER COOLER	0	140.28	140.28
				FILTERS			
10 E 800 411 253300 000				GENERAL FUND/OPERATION OF BUILDINGS/GENERAL SUPPLIES		140.28	
70671	GUMDROP BOOKS	01/18/2016	PINV94343	CE - BookOrder	2001516049	560.79	560.79
10 E 100 432 222200 000				GENERAL FUND/LMC - INST SERVICE/LIBRARY BOOKS		560.79	
70672	GUMDROP BOOKS	01/18/2016	PINV94440	BOOKS	2001516050	143.02	143.02
10 E 200 432 222200 000				GENERAL FUND/LMC - INST SERVICE/LIBRARY BOOKS		143.02	
70673	HANNAN, DENNIS J	01/18/2016	NONE	TOOLS & STORAGE	0	152.84	152.84
				BINS FROM HARBOR			
				FREIGHT			
10 E 400 411 136000 000				GENERAL FUND/TECH ED/GENERAL SUPPLIES		152.84	
70674	HEARTLAND COOPERATIVE	01/18/2016	76339	FUEL BARREL -	0	266.73	266.73

Check Nbr	Vendor Name	Check Date	Invoice Number	Invoice Desc	PO Number	Invoice Amount	Check Amount
				DIESEL			
10 E 800 348 253300 000				GENERAL FUND/OPERATION OF BUILDINGS/VEHICLE FUEL		266.73	
70675	HOUSE OF HEATING INC	01/18/2016	25087	QUARTERLY HVAC SERVICE & FILTER CHANGE, AA BATTERY	0	510.20	510.20
10 E 900 320 254300 000				GENERAL FUND/MAINTENANCE-BUILDINGS/PROPERTY SERVICE		510.20	
70676	INDIANHEAD FOODSERVICE DISTRIB	01/18/2016	DECEMBER 2015	FOOD & SUPPLIES	0	8,412.53	8,412.53
50 E 800 415 257220 000				FOOD SERVICE FUND/FOOD SERVICE-LUNCH PROGRAM/FOOD		6,233.06	
50 E 800 419 257220 000				FOOD SERVICE FUND/FOOD SERVICE-LUNCH PROGRAM/OTHER SUPP		287.61	
50 E 800 415 257225 000				FOOD SERVICE FUND/BREAKFAST PROGRAM/FOOD		1,846.16	
50 E 800 419 257225 000				FOOD SERVICE FUND/BREAKFAST PROGRAM/OTHER SUPPLIES		45.70	
70677	JOSH OR DIANA JOREN	01/18/2016	10/20/15-12/23/15	MILEAGE TO ABBY CHRISTIAN ACADEMY	0	172.67	172.67
10 E 800 341 256730 000				GENERAL FUND/PARENT TRANSPORTATION/PUPIL TRAVEL		172.67	
70678	JOSTENS	01/18/2016	18090408	DIPLOMAS AND COVERS	0	1,107.25	1,107.25
10 E 400 411 241000 000				GENERAL FUND/OFFICE OF PRINCIPAL/GENERAL SUPPLIES		1,107.25	
70679	J W PEPPER & SON INC	01/18/2016	07710816	Solo and Ensemble Music	5021516071	30.00	42.00
10 E 200 411 125500 000				GENERAL FUND/INSTRUMENTAL MUSIC/GENERAL SUPPLIES		30.00	
			07712199	Solo and Ensemble Music	5021516071	12.00	
10 E 200 411 125500 000				GENERAL FUND/INSTRUMENTAL MUSIC/GENERAL SUPPLIES		12.00	
70680	MACKIN EDUCATIONAL RESOURCES	01/18/2016	447162	2015-2016- MS-Mackin Ebooks	2001516055	74.67	74.67
10 E 200 431 222200 000				GENERAL FUND/LMC - INST SERVICE/AUDIO-VISUAL MEDIA		74.67	
70681	MARRIOTT HOTEL - MADISON WEST	01/18/2016	CONF #89550591	1 ROOM FOR FEB 4 & 5, 2016 BRYON GRAUN (& JON KLEINSCHMIDT) WISCONSIN TRACK COACHES CLINIC	0	220.00	220.00
10 E 800 342 221300 916				GENERAL FUND/INST. STAFF SERV. - TRAINING/EMPLOYEE TRAV		220.00	
70682	MARRIOTT HOTEL - MADISON WEST	01/18/2016	CONF #89552191	1 ROOM FOR FEB. 5, 2016 CHRISIE WRIGHT (WI TRACK COACHES CLINIC)	0	110.00	110.00
10 E 800 342 221300 916				GENERAL FUND/INST. STAFF SERV. - TRAINING/EMPLOYEE TRAV		110.00	
70683	MENARDS	01/18/2016	20613	LIGHT BULBS	5001516013	11.94	11.94

Check Nbr	Vendor Name	Check Date	Invoice Number	Invoice Desc	PO Number	Invoice Amount	Check Amount
10 E 400 411 126000 000				GENERAL FUND/SCIENCE/GENERAL SUPPLIES		11.94	
70684	MEYER LUMBER SUPPLY, INC.	01/18/2016	14752 1	SCREWDRIERS, RIVETS, SAW HORSES	0	33.94	103.70
10 E 800 411 254300 000				GENERAL FUND/MAINTENANCE-BUILDINGS/GENERAL SUPPLIES		33.94	
			14938 2	SAW HORSE SET RETURNED, COIL, NUTS, WASH, TAPS	0	43.44	
10 E 800 411 254300 000				GENERAL FUND/MAINTENANCE-BUILDINGS/GENERAL SUPPLIES		43.44	
			15728 1	AIR FILTERS	0	26.32	
10 E 800 411 253300 000				GENERAL FUND/OPERATION OF BUILDINGS/GENERAL SUPPLIES		26.32	
70685	MISSISSIPPI WELDERS SUPPLY CO	01/18/2016	R 721187	AG2C CYLINDER	0	29.76	29.76
10 E 400 411 136000 000				GENERAL FUND/TECH ED/GENERAL SUPPLIES		29.76	
70686	NASSCO INC	01/18/2016	S1985424.001	BATH TISSUE, BOWL CLEANER	0	486.06	907.94
10 E 800 411 253300 000				GENERAL FUND/OPERATION OF BUILDINGS/GENERAL SUPPLIES		486.06	
			S1985424.002	BOWL CLEANER	0	250.74	
10 E 800 411 253300 000				GENERAL FUND/OPERATION OF BUILDINGS/GENERAL SUPPLIES		250.74	
			S1985466.001	COTTON MOPS	0	84.00	
10 E 800 411 253300 000				GENERAL FUND/OPERATION OF BUILDINGS/GENERAL SUPPLIES		84.00	
			S1987416.001	LAUNDRY DETERGENT, TYTRO SELECT PLUS KIT	0	47.00	
10 E 800 411 253300 000				GENERAL FUND/OPERATION OF BUILDINGS/GENERAL SUPPLIES		47.00	
			S1988252.001	GUSSETED BAGS	0	40.14	
10 E 800 411 253300 000				GENERAL FUND/OPERATION OF BUILDINGS/GENERAL SUPPLIES		40.14	
70687		01/18/2016	1/4/16-1/8/16	STUDENT KITCHEN WORKER (300 MINUTES)	0	20.00	20.00
27 E 800 185 138200 341				SPECIAL EDUC./VOC ED EEN/SALARY STUDENT WORKERS		20.00	
70688		01/18/2016	1/4/16-1/8/16	STUDENT KITCHEN WORKER (212 MINUTES)	0	21.20	21.20
27 E 800 185 138200 341				SPECIAL EDUC./VOC ED EEN/SALARY STUDENT WORKERS		21.20	
70689		01/18/2016	1/4/16-1/8/16	STUDENT KITCHEN WORKER (184 MINUTES)	0	18.41	18.41
27 E 800 185 138200 341				SPECIAL EDUC./VOC ED EEN/SALARY STUDENT WORKERS		18.41	

Check Nbr Vendor Name	Check Date Invoice Number	Invoice Desc	PO Number	Invoice Amount	Check Amount
70690 PER MAR SECURITY SERVICES CORP	01/18/2016 1464994	SECURITY MONITORING - NEILLSVILLE 2/1/16-2/29/16	0	56.72	2,795.84
10 E 800 320 253300 000		GENERAL FUND/OPERATION OF BUILDINGS/PROPERTY SERVICE		56.72	
	1465459	SECURITY MONITORING -- HIGH SCHOOL 2/1/16-1/31/17	0	2,739.12	
10 E 800 320 253300 000		GENERAL FUND/OPERATION OF BUILDINGS/PROPERTY SERVICE		2,739.12	
70691 QUILL CORPORATION	01/18/2016 1837258	STRING & BUTTON STORAGE BOXES	0	116.98	229.48
10 E 800 411 232100 000		GENERAL FUND/OFFICE OF SUPERINTENDENT/GENERAL SUPPLIES		116.98	
	1837916	BATTERIES	0	58.86	
10 E 800 411 232100 000		GENERAL FUND/OFFICE OF SUPERINTENDENT/GENERAL SUPPLIES		58.86	
	2013275	STAPLES	0	53.64	
10 E 100 411 110000 000		GENERAL FUND/ELEMENTARY CURRICULUM/GENERAL SUPPLIES		53.64	
70692 Vendor Continued Void	01/18/2016				0.00
70693 RCU CARDHOLDER SERVICES	01/18/2016 24224435345102009101	WISCONSIN TRANSITION CONFERENCE REGISTRATION - FEITEN & WOLF	0	598.00	3,964.59
27 E 800 310 221300 341		SPECIAL EDUC./INST. STAFF SERV. - TRAINING/PERSONAL SER		598.00	
	24233425347980006883	SWIM FINS	0	82.93	
10 E 200 411 143000 000		GENERAL FUND/PHYSICAL EDUCATION/GENERAL SUPPLIES		82.93	
	24399005342503099494	CHROMEBOOKS	0	2,109.92	
21 E 800 411 120000 910		SPECIAL PROJECTS/REGULAR CURRICULUM/GENERAL SUPPLIES		2,109.92	
	24692165335000021789	AC ADAPTERS	0	33.69	
10 E 800 411 266000 000		GENERAL FUND/TECHNOLOGY COORD/PROJECTS/GENERAL SUPPLIES		33.69	
	24692165336000929325	MEMORY MODULE, BATTERY	0	27.18	
10 E 800 411 266000 000		GENERAL FUND/TECHNOLOGY COORD/PROJECTS/GENERAL SUPPLIES		27.18	
	24692165337000653996	STORAGE CASES, SLEEVES	0	76.46	
10 E 800 411 232100 000		GENERAL FUND/OFFICE OF SUPERINTENDENT/GENERAL SUPPLIES		76.46	
	24692165341000000586	TOOLS, FLASH DRIVES	0	47.49	
10 E 800 411 266000 000		GENERAL FUND/TECHNOLOGY COORD/PROJECTS/GENERAL SUPPLIES		47.49	

Check Nbr	Vendor Name	Check Date	Invoice Number	Invoice Desc	PO Number	Invoice Amount	Check Amount
			24692165342000519706	MONITOR STANDS	0	109.98	
10 E 400 440 241000 000				GENERAL FUND/OFFICE OF PRINCIPAL/NON-CAPITAL EQUIPMENT		54.99	
10 E 800 440 266000 000				GENERAL FUND/TECHNOLOGY COORD/PROJECTS/NON-CAPITAL EQUI		54.99	
			24692165349000864980	CABLE	0	17.98	
10 E 800 411 266000 000				GENERAL FUND/TECHNOLOGY COORD/PROJECTS/GENERAL SUPPLIES		17.98	
			24692165349000865623	BULB, KEYBOARDS	0	66.92	
10 E 200 440 222200 000				GENERAL FUND/LMC - INST SERVICE/NON-CAPITAL EQUIPMENT		19.98	
10 E 800 411 266000 000				GENERAL FUND/TECHNOLOGY COORD/PROJECTS/GENERAL SUPPLIES		26.96	
10 E 800 440 266000 000				GENERAL FUND/TECHNOLOGY COORD/PROJECTS/NON-CAPITAL EQUI		19.98	
			24692165358000329868	KEYBOARDS	0	196.34	
10 E 800 411 266000 000				GENERAL FUND/TECHNOLOGY COORD/PROJECTS/GENERAL SUPPLIES		16.49	
10 E 800 460 266000 000				GENERAL FUND/TECHNOLOGY COORD/PROJECTS/COMPUTER COMPONE		179.85	
			24717055345123458282	ADOLESCENT HEALTH SYMPOSIUM	0	398.00	
				REGISTRATION - TESMER & WRIGHT			
10 E 800 310 221300 395				GENERAL FUND/INST. STAFF SERV. - TRAINING/PERSONAL SERV		398.00	
			24906415348021371471	WISCONSIN TRACK COACHES	0	309.70	
				CONFERENCE REGISTRATION - WRIGHT, GRAUN & KLEINSCHMIDT			
10 E 800 310 221300 916				GENERAL FUND/INST. STAFF SERV. - TRAINING/PERSONAL SERV		309.70	
			74399005347503099494	CREDIT FOR TAX ON BEST BUY PURCHASE	0	-110.00	
21 E 800 411 120000 910				SPECIAL PROJECTS/REGULAR CURRICULUM/GENERAL SUPPLIES		-110.00	
70694 REINHART FOODSERVICE		01/18/2016 DEC 2015		FOOD & SUPPLIES	0	2,252.40	2,252.40
50 E 800 415 257220 000				FOOD SERVICE FUND/FOOD SERVICE-LUNCH PROGRAM/FOOD		1,772.21	
50 E 800 419 257220 000				FOOD SERVICE FUND/FOOD SERVICE-LUNCH PROGRAM/OTHER SUPP		383.49	
50 E 800 415 257225 000				FOOD SERVICE FUND/BREAKFAST PROGRAM/FOOD		96.70	
70695 REINHART FOODSERVICE (USDA)		01/18/2016 DEC 2015		FOOD	0	99.99	99.99
50 E 800 415 257220 000				FOOD SERVICE FUND/FOOD SERVICE-LUNCH PROGRAM/FOOD		99.99	
70696 TOWN OF UNITY/DIANA SCHUETTE		01/18/2016 STEP		STEP HOURS WORKED: 20	0	145.00	145.00
80 E 800 310 232200 000				COMMUNITY SERVICE FUND/COMMUNITY RELATIONS/PERSONAL SER		145.00	
70697 SCREENING FOR MENTAL HEALTH/SC		01/18/2016 3529		Self Injury Prevention Program (AODA GRANT \$)	6011516017	175.00	175.00

Check Nbr	Vendor Name	Check Date	Invoice Number	Invoice Desc	PO Number	Invoice Amount	Check Amount
10 E 800 411 221200 395				GENERAL FUND/CURRICULUM DEVELOPMENT/GENERAL SUPPLIES		175.00	
70698 MICHAEL SIERACKI		01/18/2016	REIMBURSEMENT	LAB SUPPLIES	0	43.07	43.07
10 E 400 411 126000 000				GENERAL FUND/SCIENCE/GENERAL SUPPLIES		43.07	
70699 SOLUTION TREE LLC		01/18/2016	852947	2015-2016 - CE - 439 - Professional Book	2001516056	40.95	356.55
10 E 100 439 222200 000				GENERAL FUND/LMC - INST SERVICE/OTHER MEDIA		40.95	
			852957	Simplifying Response to Intervention	6011516019	315.60	
10 E 800 411 221300 000				GENERAL FUND/INST. STAFF SERV. - TRAINING/GENERAL SUPPL		315.60	
70700 STERLING WATER INC		01/18/2016	342X04938703	SOLAR SALT	0	124.85	124.85
10 E 800 411 253300 000				GENERAL FUND/OPERATION OF BUILDINGS/GENERAL SUPPLIES		124.85	
70701 STRO'S PLUMBING LLC		01/18/2016	6906	AUGER SEWER AT CDEC	0	163.53	163.53
10 E 800 320 254300 000				GENERAL FUND/MAINTENANCE-BUILDINGS/PROPERTY SERVICE		163.53	
70702 SYSCO BARABOO LLC		01/18/2016	DEC 2015	FOOD & SUPPLIES	0	1,572.40	1,572.40
50 E 800 415 257220 000				FOOD SERVICE FUND/FOOD SERVICE-LUNCH PROGRAM/FOOD		1,238.28	
50 E 800 419 257220 000				FOOD SERVICE FUND/FOOD SERVICE-LUNCH PROGRAM/OTHER SUPP		58.04	
50 E 800 415 257225 000				FOOD SERVICE FUND/BREAKFAST PROGRAM/FOOD		276.08	
70703 T & C WATER SYSTEMS		01/18/2016	28923	BOTTLED WATER & JAN COOLER RENT	0	19.45	19.45
10 E 800 415 232100 000				GENERAL FUND/OFFICE OF SUPERINTENDENT/FOOD		19.45	
70704 TOWN OF HOARD		01/18/2016	FIRE PROTECTION		0	10.04	10.04
10 E 800 940 254200 000				GENERAL FUND/MAINTENANCE-SITES/DUES & FEES		10.04	
70705 TP PRINTING CO INC		01/18/2016	DECEMBER 2015	HORNET HIGHLIGHTS; COMMUNITY EDUCATION ADS	0	277.50	277.50
80 E 800 354 232200 000				COMMUNITY SERVICE FUND/COMMUNITY RELATIONS/PRINTING & B		142.50	
10 E 400 354 132000 000				GENERAL FUND/BUSINESS EDUCATION/PRINTING & BINDING		135.00	
70706 TUMARX PRINTING INC.		01/18/2016	27069	ACTIVITY ACCOUNT RECEIPTS	1011516033	135.00	135.00
10 E 200 411 241000 000				GENERAL FUND/OFFICE OF PRINCIPAL/GENERAL SUPPLIES		135.00	
70707 U.W. STEVENS POINT COLLEGE DAY		01/18/2016	2016	COLLEGE DAY FOR KIDS STUDENT REGISTRATION FEES	0	240.00	240.00
10 E 800 940 172000 000				GENERAL FUND/GIFTED/TALENTED/DUES & FEES		240.00	

Check Nbr	Vendor Name	Check Date	Invoice Number	Invoice Desc	PO Number	Invoice Amount	Check Amount
70708	WAL-MART COMMUNITY	01/18/2016	07545	SCIENCE SUPPLIES: peanuts & lettuce & eggs	5011516032	12.63	12.63
10 E 200 411 126000 000				GENERAL FUND/SCIENCE/GENERAL SUPPLIES		12.63	
70709	MELISSA WAVRUNEK	01/18/2016	REIMBURSEMENT	TRAINING GUIDES	0	31.50	31.50
10 E 200 439 213000 000				GENERAL FUND/PUPIL SERVICES - GUIDANCE/OTHER MEDIA		31.50	
70710	WEA TRUST	01/18/2016	30143	FEBRUARY 2016 HEALTH INSURANCE PREMIUM	0	164,026.84	164,026.84
10 L 000 000 811631 000				GENERAL FUND/HEALTH INSURANCE		134,171.08	
27 L 000 000 811631 000				SPECIAL EDUC./HEALTH INSURANCE		30,245.08	
50 L 000 000 811631 000				FOOD SERVICE FUND/HEALTH INSURANCE		12,349.06	
80 L 000 000 811631 000				COMMUNITY SERVICE FUND/HEALTH INSURANCE		104.50	
10 E 800 290 292000 000				GENERAL FUND/OTHER RETIREE PAYMENTS/OTHER EMPLOYEE BENE		-12,842.88	
70711	WISCNET	01/18/2016	6875	QUARTERLY NETWORK ACCESS PARTICIPATION 10/1/15-12/31/15	0	420.00	420.00
10 E 800 358 266000 000				GENERAL FUND/TECHNOLOGY COORD/PROJECTS/ON-LINE COMMUNIC		420.00	
70712	WI DEPT OF JUSTICE	01/18/2016	DEC 2015	4 NAME SEARCHES	0	28.00	28.00
10 E 800 310 232100 000				GENERAL FUND/OFFICE OF SUPERINTENDENT/PERSONAL SERVICES		28.00	
70713	TOWN OF HULL/NANCY WITTE	01/18/2016	STEP	STEP HOURS WORKED: 43.5	0	315.38	315.38
80 E 800 310 232200 000				COMMUNITY SERVICE FUND/COMMUNITY RELATIONS/PERSONAL SER		315.38	
70714	WTEA	01/18/2016	15022	POS. MAN: PROD WTEA CONFERENCE REGISTRATIONS - WALTERS & HANNAN	0	280.00	280.00
10 E 800 310 139000 401				GENERAL FUND/OTHER VOC.EMPLOYABILITY SKILLS/PERSONAL SE		280.00	

75 Computer Check(s) For a Total of 292,062.44

Obj	2014-15 Original Budget	2014-15 FYTD Activity	2014-154 FYTD %	2015-16 Budget	2015-16 FYTD Activity	2015-16 FYTD %	Encumbered Amount	Unencumbered Balance
100000	INSTRUCTION							
110000	ELEMENTARY CURRICULUM							
SALARIES	1,085,883.00	483,700.30	44.54	1,111,237.00	443,590.10	39.92	0.00	667,646.90
EMPLOYEE BENEFITS	660,166.00	280,088.00	42.43	702,925.00	274,688.16	39.08	0.00	428,236.84
PURCHASED SERVICES	1,800.00	1,898.00	105.44	1,500.00	0.00	0.00	0.00	1,500.00
NON-CAPITAL OBJECTS	39,211.00	32,302.48	82.38	41,075.00	25,178.97	61.30	2,300.00	13,596.03
CAPITAL OBJECTS	1,150.00	0.00	0.00	0.00	0.00	0.00	0.00	0.00
OTHER OBJECTS	0.00	0.00	0.00	0.00	0.00	0.00	0.00	0.00
ELEMENTARY CURRICULUM	1,788,210.00	797,988.78	44.63	1,856,737.00	743,457.23	40.04	2,300.00	1,110,979.77
120000	REGULAR CURRICULUM							
SALARIES	1,453,702.00	666,605.29	45.86	1,461,963.00	604,136.80	41.32	0.00	857,826.20
EMPLOYEE BENEFITS	760,794.00	326,748.10	42.95	787,618.00	309,652.18	39.32	0.00	477,965.82
PURCHASED SERVICES	6,540.00	3,692.45	56.46	5,540.00	2,250.00	40.61	0.00	3,290.00
NON-CAPITAL OBJECTS	74,935.00	40,895.47	54.57	109,285.00	68,954.76	63.10	5,988.38	34,341.86
CAPITAL OBJECTS	3,256.00	476.00	14.62	60.00	0.00	0.00	0.00	60.00
OTHER OBJECTS	4,160.00	952.06	22.89	4,750.00	2,051.00	43.18	0.00	2,699.00
REGULAR CURRICULUM	2,303,387.00	1,039,369.37	45.12	2,369,216.00	987,044.74	41.66	5,988.38	1,376,182.88
130000	VOCATIONAL CURRICULUM							
SALARIES	178,470.00	86,962.84	48.73	179,547.00	75,881.33	42.26	0.00	103,665.67
EMPLOYEE BENEFITS	109,063.00	53,861.28	49.39	114,683.00	42,636.00	37.18	0.00	72,047.00
PURCHASED SERVICES	4,400.00	3,287.35	74.71	6,012.00	2,778.96	46.22	0.00	3,233.04
NON-CAPITAL OBJECTS	11,006.00	5,858.29	53.23	29,780.00	17,741.18	59.57	2,249.92	9,788.90
CAPITAL OBJECTS	9,882.00	10,893.72	110.24	1,000.00	0.00	0.00	0.00	1,000.00
OTHER OBJECTS	120.00	0.00	0.00	0.00	3,025.00	0.00	0.00	-3,025.00
VOCATIONAL CURRICULUM	312,941.00	160,863.48	51.40	331,022.00	142,062.47	42.92	2,249.92	186,709.61
140000	PHYSICAL CURRICULUM							
SALARIES	138,194.00	64,842.86	46.92	139,818.00	62,216.14	44.50	0.00	77,601.86
EMPLOYEE BENEFITS	74,263.00	33,336.67	44.89	73,827.00	28,582.51	38.72	0.00	45,244.49
PURCHASED SERVICES	400.00	0.00	0.00	200.00	270.00	135.00	0.00	-70.00
NON-CAPITAL OBJECTS	5,570.00	5,139.31	92.27	4,720.00	4,703.52	99.65	4.95	11.53

Obj	2014-15 Original Budget	2014-15 FYTD Activity	2014-154 FYTD %	2015-16 Budget	2015-16 FYTD Activity	2015-16 FYTD %	Encumbered Amount	Unencumbered Balance
100000	INSTRUCTION							
140000	PHYSICAL CURRICULUM							
CAPITAL OBJECTS	0.00	0.00	0.00	0.00	0.00	0.00	0.00	0.00
OTHER OBJECTS	3,600.00	0.00	0.00	3,600.00	0.00	0.00	0.00	3,600.00
PHYSICAL CURRICULUM	222,027.00	103,318.84	46.53	222,165.00	95,772.17	43.11	4.95	126,387.88
150000	SPECIAL CURRICULUM							
SALARIES	0.00	0.00	0.00	0.00	0.00	0.00	0.00	0.00
EMPLOYEE BENEFITS	0.00	0.00	0.00	0.00	0.00	0.00	0.00	0.00
SPECIAL CURRICULUM	0.00	0.00	0.00	0.00	0.00	0.00	0.00	0.00
160000	CO-CURRICULAR							
SALARIES	117,324.00	72,843.32	62.09	119,288.00	67,002.88	56.17	0.00	52,285.12
EMPLOYEE BENEFITS	13,980.00	8,810.64	63.02	14,876.00	8,233.58	55.35	0.00	6,642.42
PURCHASED SERVICES	38,345.00	15,546.34	40.54	33,800.00	11,739.52	34.73	0.00	22,060.48
NON-CAPITAL OBJECTS	28,405.00	17,291.10	60.87	24,695.00	15,657.94	63.41	4,234.26	4,802.80
CAPITAL OBJECTS	645.00	0.00	0.00	0.00	0.00	0.00	0.00	0.00
OTHER OBJECTS	13,121.00	6,020.00	45.88	12,595.00	6,910.00	54.86	0.00	5,685.00
CO-CURRICULAR	211,820.00	120,511.40	56.89	205,254.00	109,543.92	53.37	4,234.26	91,475.82
170000	SPECIAL NEEDS							
SALARIES	0.00	0.00	0.00	0.00	0.00	0.00	0.00	0.00
EMPLOYEE BENEFITS	0.00	0.00	0.00	0.00	0.00	0.00	0.00	0.00
PURCHASED SERVICES	0.00	0.00	0.00	0.00	0.00	0.00	0.00	0.00
NON-CAPITAL OBJECTS	0.00	0.00	0.00	0.00	0.00	0.00	0.00	0.00
CAPITAL OBJECTS	0.00	0.00	0.00	0.00	0.00	0.00	0.00	0.00
OTHER OBJECTS	1,500.00	570.00	38.00	1,500.00	650.50	43.37	0.00	849.50
SPECIAL NEEDS	1,500.00	570.00	38.00	1,500.00	650.50	43.37	0.00	849.50
INSTRUCTION	4,839,885.00	2,222,621.87	45.92	4,985,894.00	2,078,531.03	41.69	14,777.51	2,892,585.46

Obj	2014-15 Original Budget	2014-15 FYTD Activity	2014-15 FYTD %	2015-16 Budget	2015-16 FYTD Activity	2015-16 FYTD %	Encumbered Amount	Unencumbered Balance
200000	SUPPORT SERVICES							
210000	PUPIL SERVICES							
SALARIES	144,560.00	68,072.32	47.09	131,067.00	50,229.11	38.32	0.00	80,837.89
EMPLOYEE BENEFITS	89,882.00	39,568.42	44.02	84,809.00	28,106.93	33.14	0.00	56,702.07
PURCHASED SERVICES	5,895.00	4,045.98	68.63	6,860.00	2,316.34	33.77	0.00	4,543.66
NON-CAPITAL OBJECTS	3,825.00	1,191.31	31.15	4,810.00	861.49	17.91	0.00	3,948.51
CAPITAL OBJECTS	0.00	0.00	0.00	0.00	0.00	0.00	0.00	0.00
OTHER OBJECTS	110.00	150.00	136.36	160.00	140.00	87.50	0.00	20.00
PUPIL SERVICES	244,272.00	113,028.03	46.27	227,706.00	81,653.87	35.86	0.00	146,052.13

220000 INSTRUCTIONAL STAFF SERVICES

SALARIES	174,617.00	83,062.31	47.57	161,658.00	71,274.54	44.09	0.00	90,383.46
EMPLOYEE BENEFITS	115,318.00	40,977.34	35.53	96,241.00	32,217.41	33.48	0.00	64,023.59
PURCHASED SERVICES	51,714.00	27,264.02	52.72	59,079.00	30,479.32	51.59	280.00	28,319.68
NON-CAPITAL OBJECTS	64,813.00	26,843.12	41.42	71,992.00	24,984.00	34.70	18,562.36	28,445.64
CAPITAL OBJECTS	4,930.00	5,767.77	116.99	0.00	0.00	0.00	0.00	0.00
OTHER OBJECTS	1,110.00	540.00	48.65	1,150.00	353.00	30.70	0.00	797.00
INSTRUCTIONAL STAFF SERVI	412,502.00	184,454.56	44.72	390,120.00	159,308.27	40.84	18,842.36	211,969.37

230000 GENERAL ADMINISTRATION

SALARIES	124,680.00	72,636.60	58.26	144,972.00	80,833.85	55.76	0.00	64,138.15
EMPLOYEE BENEFITS	54,329.00	36,775.69	67.69	54,269.00	29,819.91	54.95	0.00	24,449.09
PURCHASED SERVICES	49,738.00	23,650.83	47.55	51,220.00	27,584.74	53.86	0.00	23,635.26
NON-CAPITAL OBJECTS	6,765.00	4,076.71	60.26	10,598.00	4,752.70	44.85	640.00	5,205.30
CAPITAL OBJECTS	2,820.00	1,259.98	44.68	0.00	0.00	0.00	0.00	0.00
OTHER OBJECTS	8,304.00	6,339.00	76.34	7,600.00	5,786.32	76.14	0.00	1,813.68
GENERAL ADMINISTRATION	246,636.00	144,738.81	58.69	268,659.00	148,777.52	55.38	640.00	119,241.48

240000 BUILDING ADMINISTRATION

SALARIES	341,618.00	191,453.20	56.04	353,259.00	180,262.18	51.03	0.00	172,996.82
EMPLOYEE BENEFITS	195,245.00	101,964.32	52.22	187,356.00	81,351.97	43.42	0.00	106,004.03
PURCHASED SERVICES	1,300.00	1,036.00	79.69	3,475.00	1,094.00	31.48	0.00	2,381.00
NON-CAPITAL OBJECTS	9,535.00	1,267.61	13.29	8,025.00	2,659.71	33.14	600.00	4,765.29

Obj	2014-15 Original Budget	2014-15 FYTD Activity	2014-154 FYTD %	2015-16 Budget	2015-16 FYTD Activity	2015-16 FYTD %	Encumbered Amount	Unencumbered Balance
200000	SUPPORT SERVICES							
240000	BUILDING ADMINISTRATION							
CAPITAL OBJECTS	0.00	0.00	0.00	0.00	0.00	0.00	0.00	0.00
OTHER OBJECTS	1,500.00	0.00	0.00	1,115.00	0.00	0.00	0.00	1,115.00
BUILDING ADMINISTRATION	549,198.00	295,721.13	53.85	553,230.00	265,367.86	47.97	600.00	287,262.14
250000	BUSINESS ADMINISTRATION							
SALARIES	429,125.00	243,748.16	56.80	442,839.00	223,462.37	50.46	0.00	219,376.63
EMPLOYEE BENEFITS	290,694.00	143,620.95	49.41	225,204.00	97,063.80	43.10	0.00	128,140.20
PURCHASED SERVICES	1,242,843.00	672,341.10	54.10	1,116,178.00	591,963.71	53.03	0.00	524,214.29
NON-CAPITAL OBJECTS	99,250.00	53,810.54	54.22	99,350.00	71,886.51	72.36	0.00	27,463.49
CAPITAL OBJECTS	50,200.00	34,515.47	68.76	27,000.00	0.00	0.00	0.00	27,000.00
INSURANCE & JUDGMENTS	0.00	0.00	0.00	0.00	0.00	0.00	0.00	0.00
OTHER OBJECTS	2,400.00	399.47	16.64	1,600.00	800.04	50.00	0.00	799.96
BUSINESS ADMINISTRATION	2,114,512.00	1,148,435.69	54.31	1,912,171.00	985,176.43	51.52	0.00	926,994.57
260000	CENTRAL SERVICES							
SALARIES	42,670.00	23,877.69	55.96	66,620.00	26,870.75	40.33	0.00	39,749.25
EMPLOYEE BENEFITS	31,119.00	16,310.81	52.41	13,249.00	3,845.42	29.02	0.00	9,403.58
PURCHASED SERVICES	103,818.00	46,632.22	44.92	109,265.00	58,229.68	53.29	0.00	51,035.32
NON-CAPITAL OBJECTS	19,800.00	6,865.04	34.67	61,050.00	34,398.26	56.34	450.00	26,201.74
CAPITAL OBJECTS	55,250.00	27,973.82	50.63	4,500.00	1,812.00	40.27	0.00	2,688.00
OTHER OBJECTS	0.00	0.00	0.00	0.00	0.00	0.00	0.00	0.00
CENTRAL SERVICES	252,657.00	121,659.58	48.15	254,684.00	125,156.11	49.14	450.00	129,077.89
270000	INSURANCE							
INSURANCE & JUDGMENTS	125,127.00	109,603.84	87.59	105,005.00	95,068.37	90.54	0.00	9,936.63
INSURANCE	125,127.00	109,603.84	87.59	105,005.00	95,068.37	90.54	0.00	9,936.63

Obj	2014-15 Original Budget	2014-15 FYTD Activity	2014-154 FYTD %	2015-16 Budget	2015-16 FYTD Activity	2015-16 FYTD %	Encumbered Amount	Unencumbered Balance
200000	SUPPORT SERVICES							
280000	DEBT SERVICE							
DEBT RETIREMENT	1,500.00	0.00	0.00	1,500.00	0.00	0.00	0.00	1,500.00
DEBT SERVICE	1,500.00	0.00	0.00	1,500.00	0.00	0.00	0.00	1,500.00
290000	OTHER SUPPORT SERVICES							
SALARIES	0.00	0.00	0.00	0.00	0.00	0.00	0.00	0.00
EMPLOYEE BENEFITS	185,000.00	91,627.94	49.53	317,500.00	220,174.62	69.35	0.00	97,325.38
PURCHASED SERVICES	2,196.00	1,094.00	49.82	2,188.00	1,094.00	50.00	0.00	1,094.00
OTHER SUPPORT SERVICES	187,196.00	92,721.94	49.53	319,688.00	221,268.62	69.21	0.00	98,419.38
SUPPORT SERVICES	4,133,600.00	2,210,363.58	53.47	4,032,763.00	2,081,777.05	51.62	20,532.36	1,930,453.59
400000	NON-PROGRAM TRANSACTIONS							
410000	INTERFUND OPERATING TRANSFERS							
OPERATING TRANSFERS-OUT	1,128,547.00	0.00	0.00	1,064,953.00	0.00	0.00	0.00	1,064,953.00
INTERFUND OPERATING TRANS	1,128,547.00	0.00	0.00	1,064,953.00	0.00	0.00	0.00	1,064,953.00
430000	GEN. TUITION PAYMENTS							
PURCHASED SERVICES	915,655.00	17,547.13	1.92	844,000.00	16,974.93	2.01	0.00	827,025.07
NON-CAPITAL OBJECTS	0.00	0.00	0.00	0.00	0.00	0.00	0.00	0.00
OTHER OBJECTS	225.00	0.00	0.00	0.00	0.00	0.00	0.00	0.00
GEN. TUITION PAYMENTS	915,880.00	17,547.13	1.92	844,000.00	16,974.93	2.01	0.00	827,025.07
490000	NON-PROGRAM TRANSACTIONS							
OTHER OBJECTS	0.00	0.00	0.00	0.00	0.00	0.00	0.00	0.00
NON-PROGRAM TRANSACTIONS	0.00	0.00	0.00	0.00	0.00	0.00	0.00	0.00
NON-PROGRAM TRANSACTIONS	2,044,427.00	17,547.13	0.86	1,908,953.00	16,974.93	0.89	0.00	1,891,978.07

Obj	2014-15	2014-15	2014-154	2015-16	2015-16	2015-16	Encumbered	Unencumbered
	<u>Original Budget</u>	<u>FYTD Activity</u>	<u>FYTD %</u>	<u>Budget</u>	<u>FYTD Activity</u>	<u>FYTD %</u>	<u>Amount</u>	<u>Balance</u>
Grand Expense Totals	11,017,912.00	4,450,532.58	40.39	10,927,610.00	4,177,283.01	38.23	35,309.87	6,715,017.12

Number of Accounts: 3096

***** End of report *****

2015 Wisconsin Act 53

Achievement Gap Reduction (AGR) Program

On July 1, 2015, [2015 Wisconsin Act 53](#) was signed into law by Governor Walker. Act 53, Student Achievement Guarantee in Education (SAGE)/Achievement Gap Reduction (AGR) law, [s.118.43](#) and [s.118.44](#), Wis. Stats., prohibits the Department of Public Instruction (DPI) from renewing five-year SAGE contracts that expired on June 30, 2015 or any year thereafter. However, the law provides DPI the authority to issue a one-year extension under the existing terms on SAGE contracts which expired on June 30, 2015. If your SAGE school recently submitted a five-year achievement guarantee contract renewal application, your school may participate in the SAGE program for the 2015-16 school year under a one-year contract extension. If your SAGE school has a contract that extends beyond the 2015-16 school year, your school may participate in the SAGE program until the end of the existing contract.

Act 53 also allows all current SAGE schools to opt into the new AGR program as early as the 2015-16 school year. DPI will provide more information to school districts soon, but you should consider the following requirements when making your decision:

Student Achievement Guarantee in Education (SAGE)

- Continue SAGE up to the end of your current SAGE contract. NOTE: SAGE schools with contracts that expired in June 2015 will be able to continue SAGE through the end of the 2015-16 school year with a one-year contract extension based on the recently submitted application
- Maintain current SAGE rules including class size ratios of 18:1 or 30:2 in kindergarten through grade 3
- Plan for the transition to the AGR program
- Annually report to DPI:
 - class size and low-income student counts
 - end-of-year and financial report

Achievement Gap Reduction (AGR)

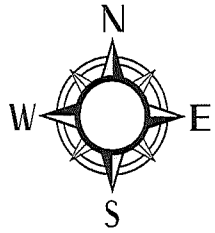
- Complete a five-year AGR contract application to begin in the 2015-16 school year
- Plan which AGR strategy/strategies your school will implement to achieve compliance with the new program:
 - one-to-one tutoring provided by a licensed teacher
 - instructional coaching for teachers provided by a licensed teacher
 - maintaining 18:1 or 30:2 classroom ratios and providing professional development on small group instruction
- Annually report to DPI:
 - class size and low-income student counts
 - description of strategies that the school board plans to implement
 - description of the strategies that the school board did implement
 - end-of-year and financial report
- Report to the school board at the end of every semester:
 - implementation of required strategies
 - performance objectives
 - progress in closing the achievement gap

CONTACTS AND ADDITIONAL SUPPORT

Please contact us with any questions about the SAGE and AGR programs:

Michael Dennison
Grants Specialist
michael.dennison@dpi.wi.gov
(608) 266-2489

Sharon Suchla
Education Consultant
sharon.suchla@dpi.wi.gov
(608) 266-3983



2016-17 Colby Elementary School

EXIT # 3

Music 117
Art 114
Pre K 111
Pre K 109

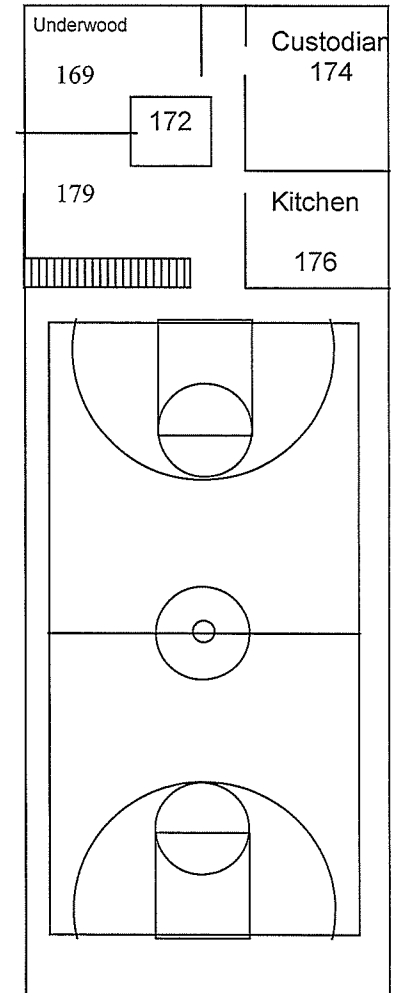
Gr. 3 119	Gr. 3 120	Gr. 3 121	Gr. 2 122	Gr. 2 123	Gr. 2 124
----------------------------	----------------------------	----------------------------	----------------------------	----------------------------	----------------------------

Title I 158	Title I 159	161	165 Johnson	166 LMC	Library 143	132	
		163	164 Feiten	167 LMC		135	Rest Room
Rest Room	Special Education 153	Special Education 150	148 Bau- mann	147 Brdha-		136	138
			Pipkorn 149	146 ELL		141	160
				144 SPED			

Kndg 106	Kndg 105	Kndg 104	Gr. 1 103	Gr. 1 102	Gr. 1 101
---------------------------	---------------------------	---------------------------	----------------------------	----------------------------	----------------------------

EXIT # 2

EXIT # 4



EXIT # 1

Walker/Rider Entrance & Exit

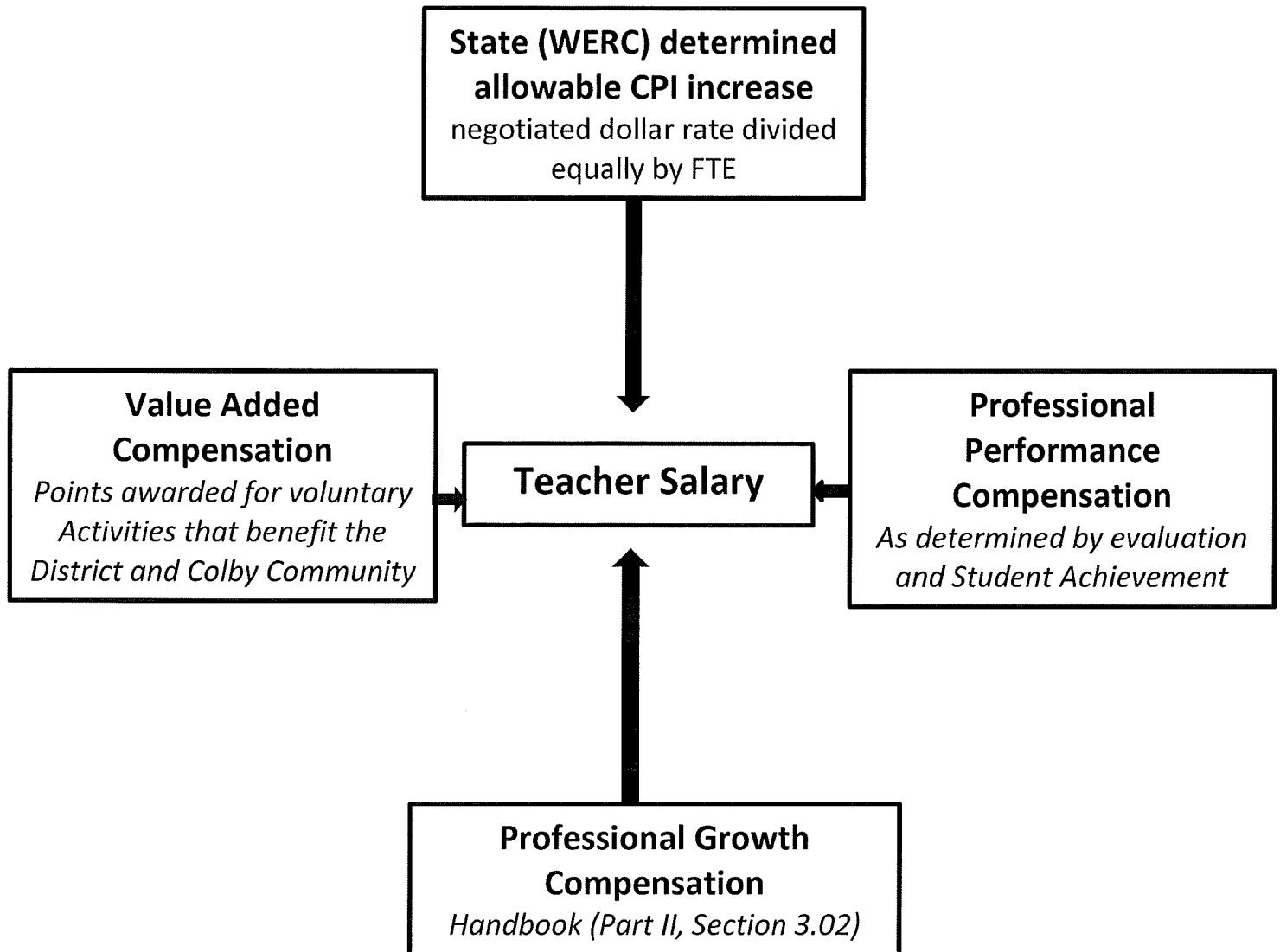
Alternative Compensation PROCESS

1. *Committee (Task Team) Drafts Template*
2. *Personnel Committee Reviews draft*
 - *Refers to Communication Council*
 - *Refers Back to Task Team*
3. *WITH Personnel Committee Approval, Forwarded and Reviewed by Communications Council for Staff review and comments*
 - *Referred back to Task Team*
 - *Referred to CEA Membership for review and comments.*

Continued Work in Task Team, then Personnel Committee, then Communications Council until a draft is ready to present to CEA membership for review

4. *Presented to CEA Membership*
 - *Written Proposal provided to all teaching staff at least three days prior*
 - *Question and answer format / discussion*
 - *Written comments received*
5. ***Final Draft and Written Comments provided to Personnel Committee***
6. ***Final Personnel Committee Review and recommendation to full Board of Education with recommendations for adoption and implementation schedule.***

Colby School District
Professional Compensation Model



Colby Alternative Compensation Model

Value Added Compensation Volunteer

(NOT an expectation)

- Spanish Proficiency -**25 pts.**
- CPR / First Aid Certification-**20 pts.**
- EMT Certification-**25 pts.**
- PLC Trained (Institute) -**20 pts.**
- Workshop Presenter-**20 pts.**
- PDP Reviewer – certified-**15 pts.**
- BLT/ Steering Committee-**20 pts.**
- Professional Publications-**25 pts.**
- State Officer – Professional organization-**25 pts.**
- Advisor to a Student with a State Wide Office-**20 pts.**
- Non-Compensated student academic support outside of the school day (pts./hour) -**1 pts./hr. up to 25**
- Certified Trainer - provided Staff Development-**10 pts.**
- District Level Committee Work-**10 pts.**
- District Residence (legal) -**15 pts.**
- Membership in District Community Service Organizations-**5 pts.**
- Participation in District Community Service Events (pts./hour) -**1 pts./hr. up to 25**
- Community Education Instructor
 - Paid position-**5 pts.**
 - Volunteer position-**15 pts.**
- Volunteer Youth Leadership (District Students) -**10 pts.**
- Volunteer Student supervision at district events (pts./hour) -**1 pts./hr. up to 25**
- Supervision of Student Teachers-**1 pts.**
- Other – Determined with Written Contract for; -**T.B.D.**
 - Specific SMART goals,
 - Identification of goal attainment,
 - Agreement on point value

Professional Performance & Preparation Compensation REQUIRED

(Expectation of Employment)

Professional Practice

- Educator Effectiveness
(Summative Year)

Six Standards

1. Professional Knowledge
 2. Instructional Planning
 3. Instructional Delivery
 4. Assessment of and for Learning
 5. Learning Environment
 6. Professionalism
- 25 points** per “Distinguished” rating

- Year One Cycle
20 points per “Distinguished” rating

- Year Two Cycle
15 points per “Distinguished” rating

Professional Licensure

15 points per DPI licensure area outside of that required for current position

Professional Preparation

15 points for a MA/ MS degree
20 points for a Ed.S. degree
25 points for a Ph.D. or Ed.D. degree

Phase 1 – Determine maximum allowable CPI increase as established by the WERC.

Phase 2 – Negotiate and agree on total CPI increase.

Phase 3 – Subtract dollars required for professional growth compensation to accommodate increases identified in Handbook Part II, Section 3.02

Phase 4 – Allocate 25% of remaining CPI to Value Added Compensation AND 25% to Professional Performance Compensation

***Phase 5 – Remaining CPI allocation is divided equally by FTE
(EVERYONE will get a raise)***

Phase 6 – Distribute Professional Growth Compensation as specified in Handbook Part II, Section 3.02

NOTE: Salary increases in Phases 5 and 6 remain in salary and determine new annual salary for individuals.

Phase 7 – District adds (3 x 25%) dollars to Value Added Compensation AND Professional Performance Compensation

Phase 8 – Distribution of Value Added Compensation AND Professional Performance Compensation based on established criteria (to be determined)

NOTE: Salary increases in Phases 7 and 8 are single year only and must be earned annually. These dollars are NOT part of annual salary for individuals.

CONTRACT
For Cooperative Educational Services
2016-17

This contract is between the Board of Control of Cooperative Educational Service Agency No. 10 (CESA 10), party of the first part, and **COLBY** School District (District).

CESA 10 has been authorized to provide services on a cooperative basis and has been authorized to enter into and approve service contracts with local school districts, county boards of supervisors and other cooperative educational services agencies as provided in Chapter 116, Wisconsin Statutes.

CESA 10 hereby agrees to provide to the District services to be performed by legally qualified personnel. Information regarding expenditures, receipts, duration, description and other matters pertaining to each service to be performed is included in the services catalogue. Contracted services shall be provided in accordance with the descriptions in the services catalogue.

CESA 10 agrees to make payments to the personnel providing the services, and to remit to the authorized governmental or private agencies such amounts for which salary deductions are required or authorized, including, but not limited to, the Federal Old Age Survivors Insurance Act, Chapter 40 Wisconsin Statutes.

CESA 10 agrees to forward federal and/or state funds which are due the party of the second part as soon as possible after receipt of said funds.

CESA 10 will invoice the District for services rendered on the following schedule: 25% July; 25% October; 25% January; 25% April; and final revision, June.

All billings from CESA 10 will be on budgeted estimated costs, except the last billing shall reflect the net annual cost of the contract's services.

The District agrees to reimburse CESA 10 for its proportionate share of costs of the services provided under this contract including but without limitation because of enumeration, unemployment compensation, litigation expense, collective bargaining and monetary awards by courts and agencies as per Section 116.03(4).

Transportation of children, if any, will be furnished by the District.


Unless the District gives written notice to CESA 10 on or prior to **February 19, 2016**, that this contract is not to be renewed as to one or more of the enumerated services, CESA 10 shall have the option to renew this contract for any of the listed services for the following 2016-17 school year, provided and on condition:

1. CESA 10 exercises the option by giving written notice thereof to the District on or before April 8, 2016
2. That the budgeted cost of the service to the District of the renewal for the 2016-17 school year shall reflect only changes made by the Board of Control as a result of salary and fringe benefits for the succeeding year.

CESA 10 is the sole employer of the person or persons providing services under this contract.

In witness whereof, the parties have set their hands the date written below.

CESA 10


Chairman, Board of Control

December 18, 2015
Date

COLBY SCHOOL DISTRICT

President or Clerk, Board of Education

Date


Secretary, Board of Control

If you are submitting your Service Contract Summary electronically please sign below acknowledging that you are formally approving the individual services submitted on-line.

District Administrator or Board President

Service Contract Estimate 2016-17



NOTE: Because some service costs are based on projected expenses, some rates may be adjusted during this time period.

Mike Haynes,
Administrator
CESA 10
725 W. Park Avenue
Chippewa Falls, WI

Colby

Operations

Code	Service	Local Cost	Grants	Total
O 1	Delivery Services	\$ 1,200		\$ 1,200
	<i>Total Operations</i>	\$ 1,200	\$ -	\$ 1,200

Learning Services

Code	Service	Local Cost	Grants	Total
LS 1	Learning Services Leadership	\$ 6,700		\$ 6,700
LS 2	Curriculum, Instruction & Assessment Inclusive	\$ 12,705		\$ 12,705
LS 2A	Curriculum, Instruction & Assessment Service	\$ -		\$ -
LS 2B	Accountability and Data Services	\$ -		\$ -
LS 2C	Gifted and Talented Services	\$ -		\$ -
LS 2D	STEM: Science, Technology, Engineering and Mathematics	\$ -		\$ -
LS 3	District Instructional Support	\$ -		\$ -
LS 4	Educator Effectiveness	\$ 2,000		\$ 2,000
LS 5	Technology Consulting and Staff Development	\$ 9,445		\$ 9,445
LS 6A	CADENC	\$ -		\$ -
LS 6B	CWETN	\$ 12,720		\$ 12,720
LS 6C	Project Circuit	\$ -		\$ -
LS 6D	WIN	\$ -		\$ -
LS 6E	Video Services	\$ -		\$ -
LS 7	Alternative Education	\$ -		\$ -
LS 8	Instructional Media Center	\$ -	\$ -	\$ -
LS 9	Big Rivers Library Consortium	\$ -		\$ -
LS 10	Student Information Systems	\$ -		\$ -
LS 11	Technical Support Specialist	\$ -		\$ -
LS 12	E-Rate Support and Planning	\$ 4,650		\$ 4,650
LS 13	Library Media Services	\$ -		\$ -
LS 14	Hosting Services	\$ -		\$ -
	<i>Total Learning Services</i>	\$ 48,220	\$ -	\$ 48,220

Facilities Management Services

Code	Service	Local Cost	Grants	Total
FM 1	Environmental Health and Safety	\$ 2,968		\$ 2,968
FM 2	Energy Management Program	\$ -		\$ -
	<i>Total Facilities Management Services</i>	\$ 2,968	\$ -	\$ 2,968

Special Education Services

Code	Service	Local Cost	Grants	Total
SE 1A	Special Education Leadership	\$ -	\$ -	\$ -
SE 1B	New Director/Designee Support	\$ -	\$ -	\$ -
SE 2A	Special Ed Administration/Fiscal Support	\$ -	\$ -	\$ -
SE 2B	Early Childhood Administration Support	\$ -	\$ -	\$ -
SE 2C	SBS/Medicaid Support*	\$ -	\$ -	\$ -
SE 2D	Program Consultation	\$ -	\$ -	\$ -
SE 2E	Professional Development	\$ -	\$ -	\$ -
SE 3A	School Psychologist Services	\$ -	\$ -	\$ -
SE 3B	School Psychologist Support	\$ -	\$ -	\$ -
SE 3C	SEEDS Software/Support	\$ -	\$ -	\$ -

Service Contract Estimate 2016-17

Colby

NOTE: Because some service costs are based on projected expenses, some rates may be adjusted during this time period.

Code	Service	Local Cost	Grants	Total
Itinerant Services				
SE 4A	Hearing Impaired Instructional Services	\$ 8,003	\$ -	\$ 8,003
SE 4B	Educational Interpreter/Communications Aide	\$ -	\$ -	\$ -
SE 4C	Educational Audiology - Basic Services	\$ 2,545	\$ 500	\$ 3,045
SE 4D	Educational Audiology - IEP Related Services	\$ 3,745	\$ 500	\$ 4,245
SE 4E	Occupational Therapy	\$ -	\$ -	\$ -
SE 4F	Physical Therapy	\$ 22,508	\$ 500	\$ 23,008
SE 4G	Vision-Impaired Services	\$ 10,302	\$ 500	\$ 10,802
In-District Personnel				
SE 5A	Early Childhood	\$ -	\$ -	\$ -
SE 5B	Speech/Language	\$ -	\$ -	\$ -
SE 6	Foster Grandparents	\$ 1,200	\$ -	\$ 1,200
<i>Total Special Education Services</i>		\$ 48,303	\$ 2,000	\$ 50,303

Total Services:		\$ 100,691	\$ 2,000	\$ 102,691
ADM	Average Daily Membership (ADM):	\$ 2,188		\$ 2,188
TOTAL COSTS:		\$ 102,879	\$ 2,000	\$ 104,879

Signature _____

Date _____

3-Year Comparison of English Language Arts and Mathematics Assessments Wisconsin Student Assessment System (WSAS)

	2013-14			2014-15			2015-16		
Test	WAA-SwD*	WKCE	The ACT**	DLM*	Badger	The ACT**	DLM*	Forward	The ACT**
Full Name	Wisconsin Alternate Assessment - Students with Disabilities	Wisconsin Knowledge & Concepts Examination	The ACT**	Dynamic Learning Maps	Badger Exam (Smarter Balanced)	The ACT**	Dynamic Learning Maps	Wisconsin Forward Exam	The ACT**
Vendor	CTB/ McGraw-Hill	CTB/ McGraw-Hill	ACT	DLM	ETS/Smarter Balanced	ACT	DLM	DRC	ACT
Required Grade(s)	3-8, 10		N/A - Optional for high school students	3-8, 11	3-8	11	3-8, 11	3-8	11
Format	Paper & Pencil			Online		Paper & Pencil	Online		Paper & Pencil
Window	Fall		Six ACT national testing dates	Spring			Spring		
Standards	Wisconsin Model Academic Standards - Extended Grade Bands	Wisconsin Model Academic Standards	ACT College & Career Readiness Standards	Wisconsin Alternate Achievement Standards – Essential Elements	Wisconsin Standards for English Language Arts and Mathematics	Wisconsin Standards for English Language Arts and Mathematics	Wisconsin Alternate Achievement Standards – Essential Elements	Wisconsin Standards for English Language Arts and Mathematics	Wisconsin Standards for English Language Arts and Mathematics

*WAA-SwD and DLM assess students with significant cognitive disabilities.

**The ACT assessment was administered statewide to Wisconsin's 11th graders for the first time in the 2014-15 school year.

News Release

Education Information Services ■ 125 South Webster Street ■ P.O. Box 7841 ■ Madison, WI 53707-7841 ■ (608) 266-3559

EMBARGOED: Not for public discussion or release until 9:30 a.m., Wednesday, January 13, 2016

Contact: Tom McCarthy, DPI Communications Officer, (608) 266-3559

DPI-NR 2016-02 A

State results issued for Badger Exam

Online assessment administered to more than 360,000 students in grades 3 through 8

MADISON — Wisconsin Student Assessment System (WSAS) results for public school students in grades three through eight showed that 51.2 percent were proficient or advanced in English language arts and 43.7 percent scored at the proficient or advanced levels in mathematics for the 2014-15 statewide exams.

“Overall results for the WSAS are a good starting point for Wisconsin’s more rigorous testing program,” said State Superintendent Tony Evers. “Though the Badger Exam is a one-year event, our new Forward Exam will be administered this spring and will provide an opportunity to improve over time.”

Both the Badger and Dynamic Learning Maps (DLM) exams, which made up the WSAS for grades three through eight, are aligned with Wisconsin Academic Standards adopted in 2010. In mathematics, students in grades three and four had stronger overall proficiency levels than students

2014-15 Wisconsin Student Assessment System Results

Percentage of Students Scoring Proficient or Advanced on the
Badger and Dynamic Learning Maps Exams

	English Language Arts	Mathematics
Grade 3	51.7	51.4
Grade 4	50.4	47.6
Grade 5	54.5	40.4
Grade 6	46.4	41.1
Grade 7	51.6	43.0
Grade 8	52.7	39.0
ALL STUDENTS	51.2	43.7

in higher grades. This may possibly be attributed to full implementation of the Wisconsin Standards for Mathematics, which served as the foundation for mathematics instruction since these students began school.

Assessment results by race and ethnicity show achievement gaps that have been evident on other state and national exams. Gaps also are apparent for English language learners, students with disabilities, and economically disadvantaged students and their peers. (See attached table)

“These achievement gaps are most troubling,” Evers said. “We are using data from our statewide assessments and other resources to identify schools that are successful with various low-achieving groups so we can learn about their strategies, share those practices across the state, and ensure every student graduates college and career ready.”

(more)

The Badger Exam, an online assessment in English language arts and mathematics, and the DLM were administered last spring to 367,327 students statewide. Just over 1 percent of those students (4,724) took the DLM, which measures the academic progress of students with significant cognitive disabilities. Participation in these two WSAS exams was 97 percent with 10,090 students not tested in English Language Arts and 10,469 not tested in mathematics. Of the not tested students, 7,535 were opted out in both subjects by their parents or guardians.

The Badger Exam and DLM replaced Wisconsin Knowledge and Concepts Examinations (WKCE) and the Wisconsin Alternate Assessment for Students with Disabilities (WAA-SwD) for students in grades three through eight. There are significant differences between the Badger and WKCE exams, which negates comparing results to prior years. (See sidebar)

WSAS results are reported across four performance levels — advanced, proficient, basic, and below basic — that are anchored in college and career readiness expectations. The Badger Exam was developed through the Smarter Balanced Assessment Consortium.

Legislation adopted as part of the 2015-17 state budget prohibits the Department of Public Instruction from using exams developed by the consortium. Data Recognition Corporation has been contracted to provide the Forward Exam, which will be a custom assessment with test items developed and reviewed by Wisconsin educators. The state has a six-year contract with the company for test development, administration, and scoring and reporting.

Differences Between Badger and WKCE		
	Badger	WKCE
Online		Paper and pencil
Administered in spring		Administered in fall
Based on Wisconsin Academic Standards for English Language Arts and Mathematics		Based on Wisconsin's Model Academic Standards for English Language Arts and Mathematics
Selected response, constructed response, and technology enhanced items		Selected response and some constructed response items
Broken down by 7 racial and ethnic groups (U.S. Census 2010)		Broken down by 5 racial and ethnic groups
Socio-economic status based on multiple sources to account for Community Eligibility Programs		Socio-economic status based on eligibility for Free and Reduced-Price School Meals

###

ATTACHMENT: A table with additional information about statewide student performance on the Badger and Dynamic Learning Maps exams follows.

NOTES: Public schools and school districts have received their Wisconsin Student Assessment System results (Badger and DLM exams) through the Department of Public Instruction data portal. Statewide and district-level results are not yet available in the WISEdash Public Portal. Please contact area schools or districts for local results. This news release will be available electronically at http://dpi.wi.gov/sites/default/files/news-release/dpinr2016_02.pdf after the embargo lifts.

2014-15 Wisconsin Badger and Dynamic Learning Maps Exams

Percent of Students Scoring Proficient or Advanced

	Enrollment Counts							English Language Arts								Mathematics						
	Grade	3rd	4th	5th	6th	7th	8th	ALL	3rd	4th	5th	6th	7th	8th	ALL	3rd	4th	5th	6th	7th	8th	ALL
All Students		61,042	60,924	61,563	60,857	60,879	62,062	367,327	51.7	50.4	54.5	46.4	51.6	52.7	51.2	51.4	47.6	40.4	41.1	43.0	39.0	43.7
American Indian		758	770	759	759	774	761	4,581	33.8	33.6	34.5	28.7	32.3	35.3	33.0	35.1	29.9	22.7	18.4	22.6	19.6	24.7
Asian		2,382	2,358	2,342	2,221	2,153	2,258	13,714	45.2	50.2	53.1	44.5	52.5	57.5	50.5	50.6	48.4	41.9	41.7	47.9	46.0	46.1
Black		5,990	5,780	5,766	5,641	5,712	5,710	34,599	19.8	20.2	21.7	16.5	22.2	24.2	20.8	19.2	14.8	9.9	9.8	10.6	9.2	12.3
Hispanic		7,528	7,081	6,980	6,752	6,512	6,560	41,413	35.3	33.5	34.7	27.7	35.3	36.7	33.9	32.6	27.1	20.4	20.5	23.3	20.0	24.2
White		42,283	43,077	43,922	43,865	44,129	45,233	262,509	60.0	57.7	62.4	53.7	58.3	58.9	58.5	60.0	55.9	48.0	48.8	50.5	45.8	51.4
Pacific Islander		50	57	34	50	33	48	272	50.0	50.9	52.9	40.0	48.5	50.0	48.5	40.0	49.1	26.5	30.0	45.5	31.3	37.5
Two or More		2,001	1,764	1,708	1,540	1,529	1,455	9,997	49.1	46.0	52.2	43.2	47.0	47.8	47.7	45.3	41.9	35.1	35.3	35.1	32.4	38.0
Unknown Race		50	37	52	29	37	37	242	28.0	40.5	30.8	17.2	29.7	18.9	28.1	30.0	29.7	13.5	27.6	13.5	8.1	20.2
English Language Learners (ELL)		4,892	4,003	3,181	2,688	2,660	2,974	20,398	21.6	14.5	11.0	7.8	11.2	16.5	14.6	23.0	13.6	7.5	6.6	8.7	8.9	12.6
English Proficient		55,494	56,430	57,835	57,656	57,653	58,701	343,769	54.6	53.1	57.0	48.3	53.6	54.7	53.6	54.2	50.2	42.4	42.8	44.8	40.7	45.8
Unknown ELL Status		656	491	547	513	566	387	3,160	33.8	34.2	37.3	33.7	35.3	36.7	35.1	32.5	28.5	22.1	23.6	20.0	19.6	24.8
Students with Disabilities		8,097	7,849	8,520	8,336	8,423	8,306	49,531	26.8	24.3	22.2	15.9	16.1	18.0	20.5	28.0	23.4	16.0	13.6	12.5	10.0	17.2
Students without Disabilities		52,307	52,596	52,484	52,014	51,915	53,378	314,694	55.8	54.5	59.9	51.4	57.6	58.3	56.2	55.3	51.4	44.5	45.7	48.2	43.7	48.1
Unknown Disability Status		638	479	559	507	541	378	3,102	32.3	32.8	34.3	32.0	34.0	33.9	33.2	32.8	29.4	20.8	23.7	19.8	18.3	24.6
Economically Disadvantaged		27,824	22,392	26,246	25,390	25,119	21,181	148,152	35.9	37.1	37.3	29.0	35.1	38.1	35.3	35.2	33.5	23.1	22.8	25.2	23.6	27.3
Not Economically Disadvantaged		32,256	37,849	34,476	34,678	34,878	40,301	214,438	66.0	58.7	68.1	59.6	64.1	60.7	62.7	66.1	56.3	54.0	54.9	56.5	47.4	55.6
Unknown Economic Status		962	683	841	789	882	580	4,737	29.6	29.4	32.6	27.8	30.2	29.8	29.9	29.5	25.8	18.9	19.6	16.6	16.4	21.4

Summary files provide a snapshot of Badger and DLM performance and are as up-to-date, complete, and accurate as possible based on the currently available data and the processes DPI has put in place for aggregating them; however, these data are not yet certified and are subject to change.

News Release

Education Information Services ■ 125 South Webster Street ■ P.O. Box 7841 ■ Madison, WI 53707-7841 ■ (608) 266-3559

EMBARGOED: Not for public discussion or release until 9:30 a.m., Wednesday, January 13, 2016

Contact: Tom McCarthy, DPI Communications Officer, (608) 266-3559

DPI-NR 2016-03 B

Statewide ACT assessment opens opportunities

MADISON — For the first time in Wisconsin history, all public school 11th-graders had the opportunity to take the ACT college admissions exam during the 2014-15 school year as part of the more rigorous Wisconsin Student Assessment System.

Last spring, 65,065 public high school juniors had the opportunity to take either the ACT Plus Writing or Dynamic Learning Maps (DLM), an alternate assessment that measures the academic progress of students with significant cognitive disabilities. Results show that 45.7 percent of students were proficient or advanced in English language arts and 35.9 percent achieved at those performance levels in mathematics.

“What an opportunity for our students,” said State Superintendent Tony Evers. “Taking the ACT exposes young people to the expectations for college and careers and may prompt those who weren’t considering further education beyond high school to finish strong and take the leap into higher education and training.”

The ACT is scored on a scale of one to 36 and consists of five subject area tests: English, reading, writing, mathematics, and science. The 2014-15 statewide composite score for public school juniors who took the ACT was 20.0.

For accountability purposes, the Department of Public Instruction worked with content experts across the state to establish cut scores along four

Wisconsin's ACT Performance Levels

	Below Basic	Basic	Proficient	Advanced
ELA	1-14	15-19	20-27	28-36
Math	1-16	17-21	22-27	28-36

performance categories: advanced, proficient, basic, and below basic. Wisconsin’s English language arts scores are comprised of the English, reading, and writing subtests. While Wisconsin specific, the cut scores generally mirror college readiness benchmarks set by ACT. Wisconsin student proficiency rates showed achievement gaps for various student groups. (See attached table)

“Assessing for college and career readiness sets the bar very high, yet that is what employers and postsecondary schools tell us is required for high school graduates to be successful,” Evers noted. “The statewide

(more)

ACT assessment establishes a baseline of student performance that we can work from to improve academic achievement for all student groups.”

Of the 65,065 students enrolled in 11th grade for the 2014-15 school year, 742 juniors, or 1.1 percent, took the DLM. Parents, students, and teachers received performance reports during the summer. Administration of statewide exams in the ACT suite for the 2015-16 school year begins in March.

Historically, ACT results have been released annually for public and private school graduates who took the test during their high school career. For the 2015 graduating class, 46,738 students or approximately 73 percent of all graduating seniors, took the ACT and had a composite score of 22.2. The differences in the number of students, the multiple times graduates may have taken the ACT, and the fact that many graduates take the test during their final year of high school make comparisons between statewide and graduating class ACT results invalid and flawed.

###

ATTACHMENT: Tables with additional information about statewide student performance on the ACT Plus Writing and Dynamic Learning Maps exams follow.

NOTES: Public schools and school districts have received their ACT and DLM results through the Department of Public Instruction data portal. Statewide and district-level results are not yet available in the WISEdash Public Portal. Please contact area schools or districts for local results. This news release will be available electronically at http://dpi.wi.gov/sites/default/files/news-release/dpinr2016_03.pdf after the embargo lifts.

2014-15 ACT and Dynamic Learning Maps Performance

Percent of 11th-Grade Students Scoring Proficient or Advanced

Student Group	Enrollment	English Language Arts	Mathematics
All Students	65,065*	45.7	35.9
American Indian	772	21.8	14.8
Asian	2,170	40.4	38.0
Black	5,985	12.6	6.2
Hispanic	5,784	24.2	15.8
Pacific Islander	59	37.3	23.7
Two or More	1,327	41.3	29.8
White	48,804	53.1	42.5
Unknown Race	164	23.2	15.2
Economically Disadvantaged	22,370	24.8	16.8
Not Economically Disadvantaged	41,648	57.6	46.8
Unknown Economic Status	1,047	16.1	10.7
English Language Learners	1,453	3.2	3.2
English Proficient	63,078	46.8	36.9
Unknown ELL Status	534	23.8	15.2
Students with Disabilities	8,324	11.7	6.5
Students without Disabilities	56,234	50.9	40.5
Unknown Disability Status	507	22.9	14.4

* Of the 65,065 11th-grade students enrolled at time of ACT testing, 742 students participated in the Dynamic Learning Maps (DLM), an alternate assessment for students with significant cognitive disabilities. These DLM students are included in the data above.

2014-15 Average ACT Performance*

Student Group	Enrollment	Composite	Average Scores	
			English Language Arts	Mathematics
All Students	64,323	20.0	19.3	20.0
American Indian	755	17.1	16.3	17.2
Asian	2,142	19.6	19.0	20.5
Black	5,846	15.6	15.1	16.0
Hispanic	5,709	17.2	16.8	17.5
Pacific Islander	58	18.6	18.1	18.6
Two or More	1,311	19.8	19.2	19.5
White	48,339	20.8	20.1	20.7
Unknown Race	163	16.4	15.8	17.0
Economically Disadvantaged	21,984	17.4	16.7	17.6
Not Economically Disadvantaged	41,303	21.3	20.6	21.3
Unknown Economic Status	1,036	16.5	15.8	16.8
English Language Learners	1,407	13.7	12.7	15.2
English Proficient	62,389	20.1	19.5	20.1
Unknown ELL Status	527	17.0	16.4	17.2
Students with Disabilities	7,597	15.0	13.8	15.7
Students without Disabilities	56,226	20.6	20.0	20.6
Unknown Disability Status	500	16.8	16.3	17.2

* These data do not include 742 students who participated in the Dynamic Learning Maps Exam instead of the ACT.

2016-17 Colby School District Calendar

August					September					October				
M	T	W	T	F	M	T	W	T	F	M	T	W	T	F
1	2	3 ^{NT}	4	5				1	2	3	4	5	6	7
8	9	10	11	12	5 ^H	6	7	8	9	10	11	12	13	14
15	16	17	18	19	12	13	14	15	16	17	18	19	20 ^{PT}	21
22	23 ^{NT}	24 ^{IN}	25 ^{IN}	26	19	20	21	22	23	24	25	26	27	28
29	30	31			26	27	28	29	30	31				

November					December					January				
M	T	W	T	F	M	T	W	T	F	M	T	W	T	F
	1	2	3	4 ^Q				1	2	2	3	4	5	6
7	8	9	10	11	5	6	7	8	9	9	10	11	12	13
14	15	16	17	18	12	13	14	15	16	16	17	18	19 ^Q	20 ^{IN}
21	22	23 ^{IN}	24	25	19	20	21	22	23	23	24	25	26	27
28	29	30			26	27	28	29	30	30	31			

February					March					April				
M	T	W	T	F	M	T	W	T	F	M	T	W	T	F
		1	2	3			1	2 ^{PT}	3	3	4	5	6	7
6	7	8	9	10 ^{MU}	6	7	8	9	10	10	11	12	13 ^{MU}	14
13	14	15	16	17	13	14	15	16	17	17	18	19	20	21
20	21	22	23	24	20	21	22	23	24 ^Q	24	25	26	27	28
27	28				27	28	29	30	31					

May					June				
M	T	W	T	F	M	T	W	T	F
1	2	3	4	5				1	2
8	9	10	11	12	5	6	7	8	9
15	16	17	18	19	12	13	14	15	16
22	23	24	25	26	19	20	21	22	23
29 ^H	30	31			26	27	28	29	30

September 1, 2016 Students' First Day of School

..... No School for Students

November 4, January 20, March 24, June 2 End of Quarter/Semester

IN Inservice for Teachers

NT New Teacher Inservice Day

MU Weather Make Up Day

Late Start schedule for EACH Monday – 1 hour late for students.

EARLY dismissal (12:30) on Oct. 20th and March 2nd for P/T Conferences & June 2nd

May 26, 2017 Graduation

June 2, 2017 Students' Last Day of School

Student Instructional Days **180**

Parent/Teacher Conferences –

Oct. 20th and March 2nd from 1:00 to 4:00 and 5:00 to 8:45 2.0

Inservice (August 24, 25, Nov. 23, and Jan. 20) 4.0

Teacher Holidays 2.0

Total **188**

No School for Students

Sept. 5
Oct. 21
Nov. 23, 24, 25
Dec. 23, 26, 27, 28, 29, 30
Jan. 20
Feb. 10
March 3
April 13, 14, 17
May 30

Parent Teacher Conferences

Oct. 20th from 1:00 to 4:00 and 5:00 to 8:45
March 2nd from 1:00 to 4:00 and 5:00 to 8:45

Snow / Inclement Weather or Health Related Cancellation

The first (1) day lost to such would not be rescheduled.
The second (2) would be made up on February 10, 2017
The third (3) would be made up on April 13, 2017

Board Approval on

2016-2017 CALENDAR-SCHOOL DISTRICT OF ABBOTSFORD

AUGUST 2016

Sun	Mon	Tue	Wed	Thu	Fri	Sat
	1	2	3	4	5	6
7	8	9	10	11	12	13
14	15	16	17	18	19	20
21	22	23	24	25	26	27
28	29	30	31			

0-4

SEPTEMBER 2016

Sun	Mon	Tue	Wed	Thu	Fri	Sat
				1	2	3
4	5	6	7	8	9	10
11	12	13	14	15	16	17
18	19	20	21	22	23	24
25	26	27	28	29	30	

21-0

OCTOBER 2016

Sun	Mon	Tue	Wed	Thu	Fri	Sat
						1
2	3	4	5	6	7	8
9	10	11	12	13	14	15
16	17	18	19	20	21	22
23	24	25	26	27	28	29
30	31					

19-1-1

NOVEMBER 2016

Sun	Mon	Tue	Wed	Thu	Fri	Sat
		1	2	3	4*	5
6	7	8	9	10	11	12
13	14	15	16	17	18	19
20	21	22	23	24	25	26
27	28	29	30			

19-0

DECEMBER 2016

Sun	Mon	Tue	Wed	Thu	Fri	Sat
				1	2	3
4	5	6	7	8	9	10
11	12	13	14	15	16	17
18	19	20	21	22	23	24
25	26	27	28	29	30	31

16-0

JANUARY 2017

Sun	Mon	Tue	Wed	Thu	Fri	Sat
1	2	3	4	5	6	7
8	9	10	11	12	13	14
15	16	17	18	19*	20	21
22	23	24	25	26	27	28
29	30	31				

21-1

FEBRUARY 2017

Sun	Mon	Tue	Wed	Thu	Fri	Sat
			1	2	3	4
5	6	7	8	9	10	11
12	13	14	15	16	17	18
19	20	21	22	23	24	25
26	27	28				

20-0

MARCH 2017

Sun	Mon	Tue	Wed	Thu	Fri	Sat
			1	2	3	4
5	6	7	8	9	10	11
12	13	14	15	16	17	18
19	20	21	22	23	24*	25
26	27	28	29	30	31	

23-0

APRIL 2017

Sun	Mon	Tue	Wed	Thu	Fri	Sat
						1
2	3	4	5	6	7	8
9	10	11	12	13	14	15
16	17	18	19	20	21	22
23	24	25	26	27	28	29
30						

18-0

MAY 2017

Sun	Mon	Tue	Wed	Thu	Fri	Sat
	1	2	3	4	5	6
7	8	9	10	11	12	13
14	15	16	17	18	19	20
21	22	23	24	25	26	27
28	29	30	31			

22-0

JUNE 2017

Sun	Mon	Tue	Wed	Thu	Fri	Sat
				1*	2	3
4	5	6	7	8	9	10
11	12	13	14	15	16	17
18	19	20	21	22	23	24
25	26	27	28	29	30	

JULY 2017

Sun	Mon	Tue	Wed	Thu	Fri	Sat
						1
2	3	4	5	6	7	8
9	10	11	12	13	14	15
16	17	18	19	20	21	22
23	24	25	26	27	28	29
30	31					

Legend

August 3
August 22-26.
August 29 & 30
September 1
September 5
October 5.
October 6
October 7
November 18
November 23-25
December 23-January 1
January 20
February 17
March 17
March 24
April 13
April 14-18
May 20.
May 29
June 1

New Teacher/Mentor Orientation
1.5 Work Day. To be worked in .5 day blocks
1.5 Inservice. To be scheduled by administration.
First Day of School for Students
No School. Labor Day
Early Release at 12:30. Parent/Teacher Conferences 1:00-9:30
No School. Teacher In-service
No School
Early Release at 12:30.
No School. Thanksgiving Break.
No School. Winter Break
No School. Teacher In-service (.5 Workday-.5 Inservice)
Early Release at 12:30
Early Release at 12:30
Solo Ensemble. Grades Pre-K-5 Only
No School. Teacher In-Service
No School. Spring Break.
Graduation (Tentative)
No School. Memorial Day
Early Release at 12:30. Last Day of School

MCSE Shared In-service is August 30th.

Teachers will be on duty between 7:45 a.m. and 3:45 a.m. (3:30 on Fridays and days preceding holiday vacation.

The first inclement weather/emergency day will be forgiven.

The second inclement weather/emergency day will be made up on June 2, 2017

Further school closings due to inclement weather or emergencies may be made up at the end of the school year at the discretion of the School Board.



=No School
* =End of Quarter
=In-Service
=Workday
=Early Release
=No School
=Solo Ensemble

Inservice Days 4
Work Days 2

Parent Conf. Days 1
TOTAL 187
NEW TEACHERS 188

School District of Spencer 2016-2017

SEPTEMBER

S	M	T	W	Th	F
				1	2
4	5	6	7	8	9
11	12	13	14	15	16
18	19	20	21	22	23
25	26	27	28	29	30

OCTOBER

S	M	T	W	Th	F
2	3	4	5	6	7
9	10	11	12	13	14
16	17	18	19	20	21
23	24	25	26	27	28
30	31				

NOVEMBER

S	M	T	W	Th	F
		1	2	3	4
6	7	8	9	10	11
13	14	15	16	17	18
20	21	22	23	24	25
27	28	29	30		

DECEMBER

S	M	T	W	Th	F
				1	2
4	5	6	7	8	9
11	12	13	14	15	16
18	19	20	21	22	23
25	26	27	28	29	30

JANUARY

2017

S	M	T	W	Th	F
1	2	3	4	5	6
8	9	10	11	12	13
15	16	17	18	19	20
22	23	24	25	26	27
29	30	31			

2-Aug	New Teacher Inservice
9-Aug	New Teacher Inservice
29-30 Aug	Teacher Inservice
30-Aug	Meet Your Teacher 4-6:30
31-Aug	Teacher workday
5-Sep	No Classes/Labor Day
1-Sep	First Student Day

3-Oct	PT Conferences 4-8
6-Oct	PT Conferences 1-4
7-Oct	No School
28-Oct	No School/Teacher Insrvc

7-Nov	End of Quarter
23-Nov	Early Release Day
24-27 Nov	Thanksgiving Vacation
28-Nov	Classes Resume

24-31 Dec	Winter Vacation
-----------	-----------------

1-2 Jan	Winter Vacation
3-Jan	Classes Resume
19-Jan	End of Semester
19-Jan	Early Release Day
20-Jan	No School/Teacher Workday

FEBRUARY

S	M	T	W	Th	F	S
			1	2	3	4
5	6	7	8	9	10	11
12	13	14	15	16	17	18
19	20	21	22	23	24	25
26	27	28				

MARCH

S	M	T	W	Th	F	S
			1	2	3	4
5	6	7	8	9	10	11
12	13	14	15	16	17	18
19	20	21	22	23	24	25
26	27	28	29	30	31	

APRIL

S	M	T	W	Th	F	S
						1
2	3	4	5	6	7	8
9	10	11	12	13	14	15
16	17	18	19	20	21	22
23/30	24	25	26	27	28	29

MAY

S	M	T	W	Th	F	S
	1	2	3	4	5	6
7	8	9	10	11	12	13
14	15	16	17	18	19	20
21	22	23	24	25	26	27
28	29	30	31			

JUNE

S	M	T	W	Th	F	S
				1	2	3
4	5	6	7	8	9	10
11	12	13	14	15	16	17
18	19	20	21	22	23	24
25	26	27	28	29	30	

27-Feb	Parent Teacher Conf 4-8pm
2-Mar	Parent Teacher Conf 1-4pm
3-Mar	No School/Teacher Insrvc
27-Mar	End of Quarter
12-Apr	Early Release Day
13-17 Apr	Spring Break
18-Apr	Classes Resume
20-May	Graduation
29-May	No Classes/Memorial Day

* 3rd snow day, make-up is Apr. 12 (early release day would be Apr. 13) ; 4th snow day, make-up is Apr. 17 shortening up Spring Break

OPEN ENROLLMENT LIMITATIONS

Wisconsin DPI Guidance: State statute requires the school board to designate the number of special education spaces at the January Board meeting (Policy 423). In doing so the Board should calculate a number of spaces for each special education program or service for which a case load or class size can be established. The board can take into account the level of service it is able to provide. It is not necessary to designate special education spaces by grade.

“An application may only be denied if there is no space in the special education or related services required in the pupil’s IEP or if the special education or related services are not available.”

Note: When an application is submitted the board (or designee) must review the pupils IEP individually and must be able to provide all of the required special education and related services in the IEP.

In accordance with Board Policy #423, “Preferences are given in such situations to students already attending school in the District to which they are applying and to siblings of such students.”

Level	Service /Program	Space Limits
PreK	Speech / Language ONLY	No Limits
K through 3	Speech / Language ONLY	No Limits
4 through12	Speech / Language ONLY	No Limits
Early Childhood (3 year olds)		8
PreK through 3	Intellectual Disability	8
4 through12	Intellectual Disability	8
Early Childhood (4 year olds)		12
K through 3	Cross Categorical	12
4 through 7	Cross Categorical	12
8 through 12	Cross Categorical	12

BOARD APPROVAL: 1/18/2016